



Enriching Lives

**ILLUSTRATED SPARE PART LIST
FOR**

**4R1040 ENGINE
S/F POWER GENERATION
A/C – INTERNACO (EXPORT)**

**APPLICATION CODE NO.
4H.2145**

KIRLOSKAR OIL ENGINES LIMITED

Regd. Office: Laxmanrao Kirloskar Road, Khadki, Pune - 411 003, INDIA.
Tel.: +91 (20) 2581 0341, 2581 5341. Fax: +91 (20) 2581 3208, 2581 0209.
email: global@koel.co.in Website: www.kirloskar.com

AUGUST – 2006

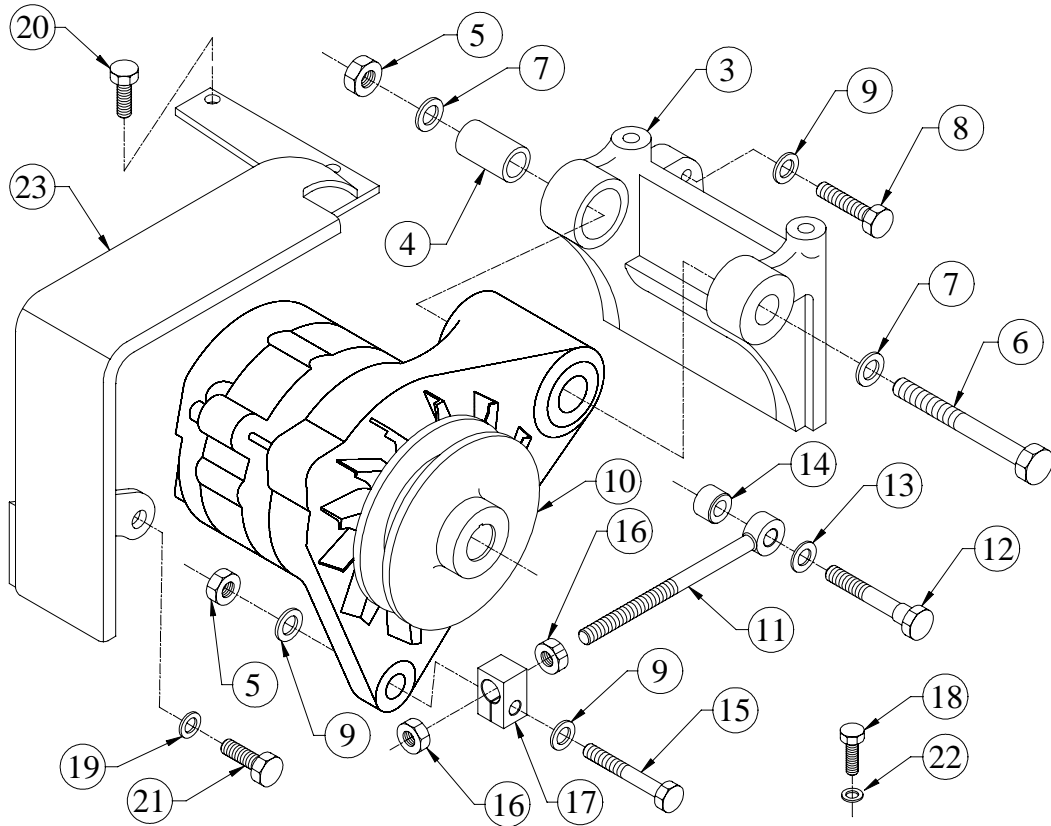
PUBLICATION NO. 4H.308.84.0.00

GROUP INDEX
APPLICATION CODE 4H.2145

SR.NO.	GROUP NO.	DESCRIPTION	QTY.	PAGE NO.
1	4H.1151...EXP	AIR INLET MANIFOLD FOR PCV	1	4
2	04.367.1	ALTERNATOR (STAGE 1) MICO, 12V55A	1	5
3	4H.198	ALTERNATOR MOUNTING AND BELT GUARD (TURBO) WITH 68PCD PULLEY SINGLE GROOVE	1	6, 7
4	04.587	ASSEMBLY OF DRY TYPE AIR CLEANER (KMFL KFA-01-1-7149) WITHOUT SAFETY ELEMENT	1	8
5	4H.003	CAMSHAFT	1	9
6	4H.266...EXP	COVER FOR FUEL PUMP GEAR (PG)	1	10
7	2H.034	CRANK PULLEY (SPA, SINGLE GR) PG	1	11
8	4H.002	CRANK SHAFT	1	12
9	4H.001...EXP	CRANKCASE	1	13 TO 16
10	4H.063...EXP	CYLINDER HEAD (EXPORT)	1	17 TO 19
11	2H.008	CYLINDER LINER. (105 DIA)	4	20
12	2H.013...EXP	DELIVERY BODY	1	21
13	04.445	DIPSTICK (PRESSED SUMP)	1	22
14	4H.228	ENGINE MNTG.FOOT (225 HT.)	1	23
15	2H.124	ENGINE MOUNTING FOOT (FOR PACKING PURPOSE)	1	24
16	4H.383	EXHAUST MANIFOLD	1	25
17	04.329	EXHAUST SILENCER & MTG.	1	26
18	46.357	EXPANSION BELLOW (2.5") AND MOUNTING	1	27
19	4H.038	FLYWHEEL HOUSING (SAE3-144.5)	1	28
20	04.039	FLYWHEEL (C-110 PTO & SP-111 PTO)	1	29
21	4H.179...EXP	FRONT COVER FOR PG APPLICATION	1	30
22	4H.006.2	FUEL INJECTION PUMP (STAGE TWO)	1	31
23	4H.122...EXP	FUEL PUMP 9 MM LIFT	1	32, 33
24	2H.011	FUEL PUMP GEAR.	1	34
25	4H.1074...EXP	GEAR CASING WITH DEFLECTOR	1	35
26	4H.050	HIGH PRESSURE PIPE (700 MM)	1	36
27	4H.073.1	HOSE CONN. (PG RADIATOR, STAGE 1)	1	37
28	4H.237	INTERMEDIATE GEAR AND SUPPORT (FOR ENGINE W/O AUTO TIMER)	1	38
29	4H.569	LEAK OFF PIPE (M12 UNION) FOR SHANTI (36&50KVA)	1	39
30	4H.070	LIFTING HOOK	1	40
31	4H.690	LUB OIL HEADER & FILTER ASSLY FOR KIM HOT START	1	41
32	4H.201	LUB OIL SUMP (SHEET METAL)	1	42
33	2H.092.1	LUBE OIL PR GAUGE SENDOR	1	43
34	3H.005	LUBE.OIL PUMP.	1	44, 45
35	4H.404...EXP	MOUNTING FOR DRY TYPE AIR CLEANER (04.586 /04.587)	1	46

TITLE :- ALTERNATOR MOUNTING AND BLT GAURD (TURBO)

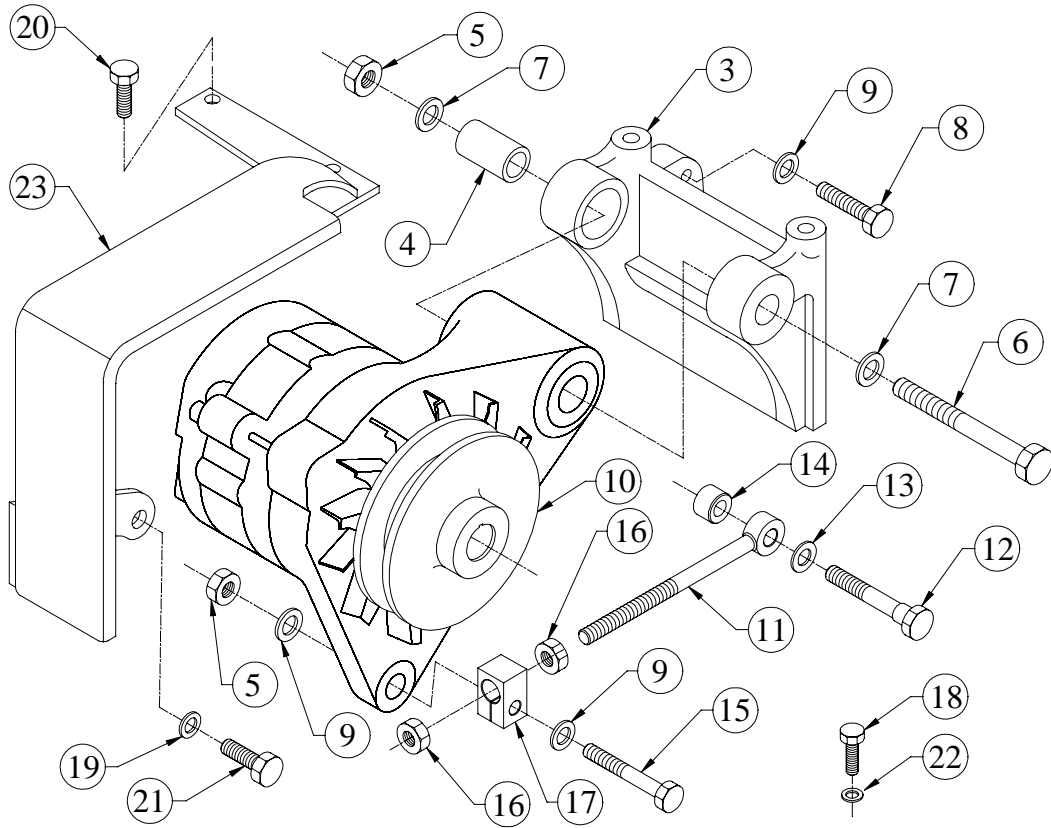
GROUP :- 4H.198



SR.NO.	PART NO.	DESCRIPTION	QTY.	REMARKS
*1	4H.198.10.0.00	ALTERNATOR MOUNTING KIT	1	CONSISTING OF SR. NO.- 2 8 TO 19
*2	4H.044.20.0.00	MOUNTING SUBASLY. FOR ALTERNATOR	1	CONSISTING OF SR. NO.- 3 TO 7
3	48.175.07.0.00	BKT.FOR ALT	1	
4	48.067.04.0.00	BUSH FOR ALTERNATOR (IN BRACKET)	1	
5	50.006.10.000.	NUT - M10X1.5 - GR.8	1	
6	48.067.03.7.00	DOWEL BOLT FOR ALTERNATOR	1	
7	50.506.10.000.	PLAIN MACHINED WASHER - M10	2	
8	50.003.10.040.	SET SCREW - M10X1.5X40 - 8.8	2	
9	50.506.10.000.	PLAIN MACHINED WASHER - M10	6	
10	3H.041.02.0.00	PULLEY FOR ALTERNATOR (SPA 68 PCD)	1	
11	4H.329.24.0.00	EYE BOLT	1	
12	4H.198.02.0.00	LOCATING BOLT (FOR EYE BOLT)	1	
13	50.506.12.000.	PLAIN MACHINED WASHER - M12	1	
14	4H.198.03.0.00	SPACER (FOR EYE BOLT)	1	

TITLE :- ALTERNATOR MOUNTING AND BLT GAURD (TURBO)

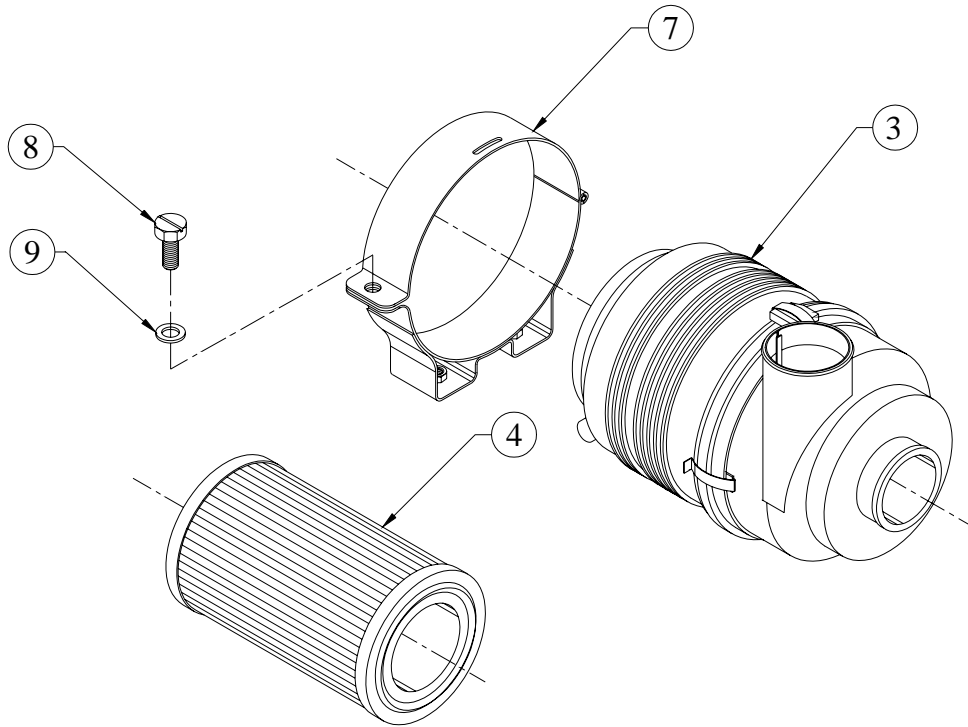
GROUP :- 4H.198



SR.NO.	PART NO.	DESCRIPTION	QTY.	REMARKS
15	50.002.10.055.	SET BOLT - M10X1.5X55 - 8.8	1	
16	50.006.10.000.	NUT - M10X1.5 - GR.8	2	
17	4H.329.26.0.00	SWIVEL PIECE	1	
18	50.003.08.018.	SET SCREW - M8X1.25X18 - 8.8	1	
19	50.506.08.000.	PLAIN MACHINED WASHER - M8	1	
20	50.003.06.012.	SET SCREW - M6X1X12 - 8.8	2	
21	50.003.08.020.	SET SCREW - M8X1.25X20 - 8.8	1	
22	50.506.08.000.	PLAIN MACHINED WASHER - M8	3	
23	4H.198.04.0.00	BELT GUARD	1	

TITLE :- ASSEMBLY OF DRY TYPE AIR CLEANER (KMFL KFA-01-1-7149) WITHOUT SAFETY ELEMENT

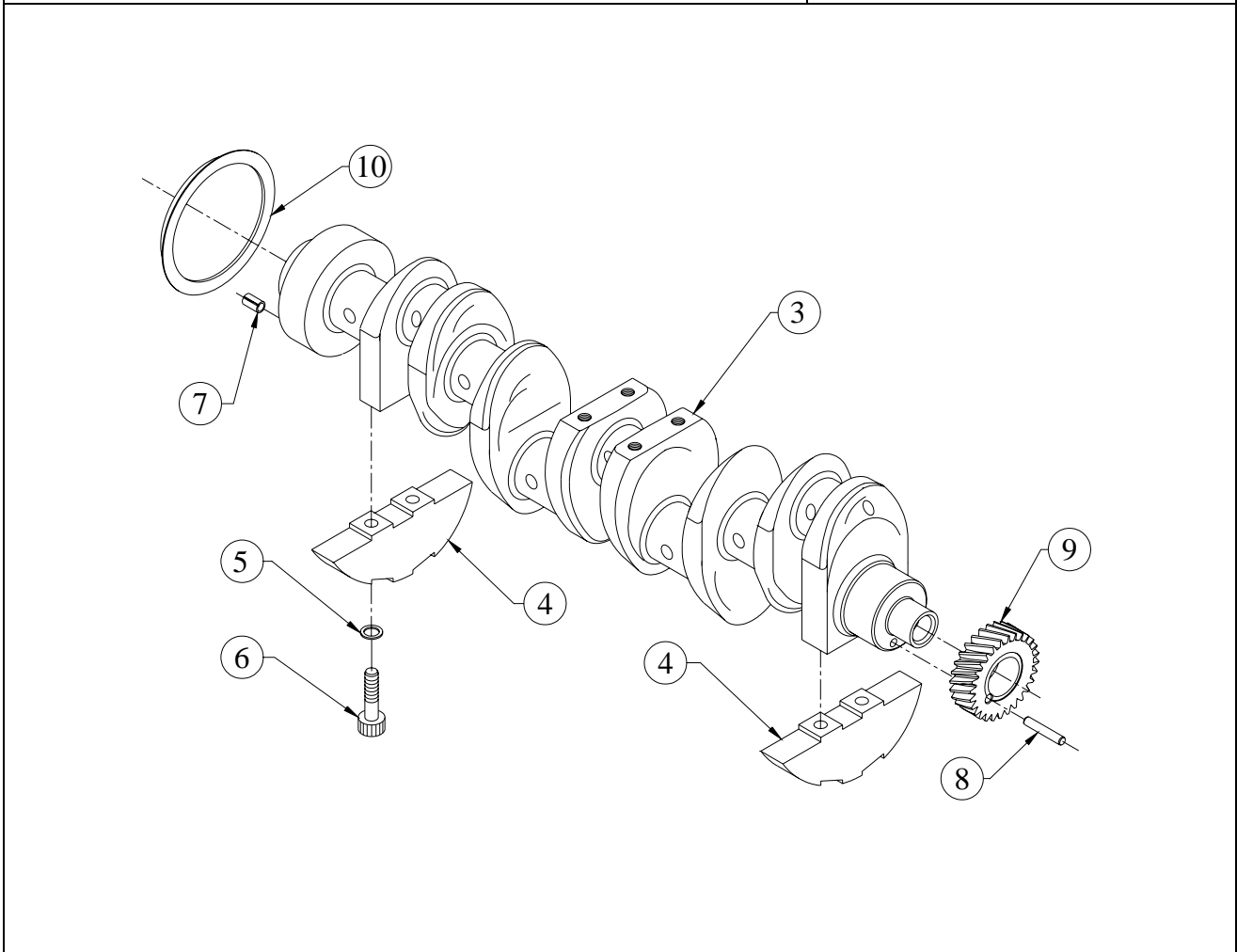
GROUP :- 04.587



SR.NO.	PART NO.	DESCRIPTION	QTY.	REMARKS
*1	04.587.20.0.00	ASSEMBLY OF AIR CLEANER (AIR CLEANER + STRAP)	1	CONSISTING OF SR. NO. 2 & 6
*2	04.587.10.0.00	ASSEMBLY OF DRY TYPE AIR CLEANER WITHOUT SAFETY ELEMENT	1	CONSISTING OF SR. NO. 3 TO 5
3	04.586.02.0.00	AIR CLEANER HOUSING	1	
4	04.586.03.0.00	MAIN ELEMENT FOR AIR CLEANER	1	
*5	04.586.05.0.00	VACUATOR VALVE FOR AIR CLEANER	1	NOT ILLUSTRATED
*6	04.586.20.0.00	ASSEMBLY OF STRAP FOR DRY TYPE AIR CLEANER (04.586/04.587)	1	CONSISTING OF SR. NO. 7 TO 9
7	04.586.01.0.00	MOUNTING STRAP FOR DRY TYPE AIR CLEANER (04.586/04.587)	1	
8	50.003.08.010	SET SCREW - M8X1.25X10 - 8.8	1	
9	50.506.08.000	PLAIN MACHINED WASHER - M8	1	

TITLE :- CRANK SHAFT

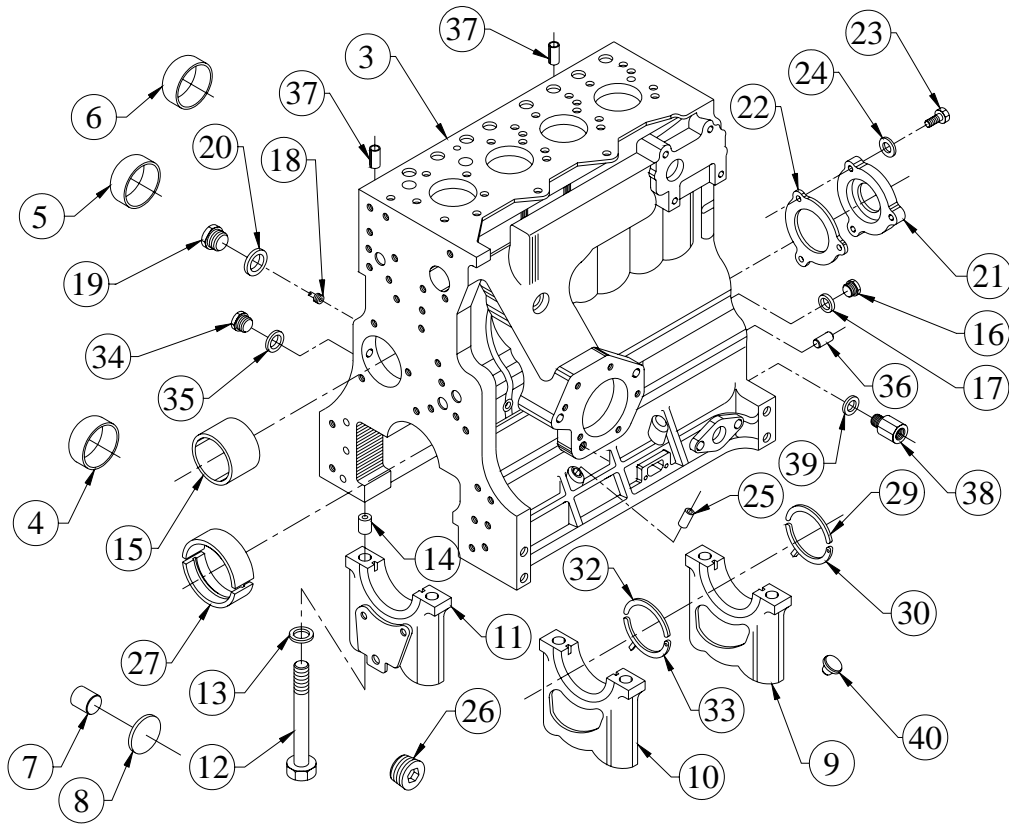
GROUP :- 4H.002



SR.NO.	PART NO.	DESCRIPTION	QTY.	REMARKS
*1	4H.002.10.0.00	CRANKSHAFT AASY.WITH GEAR	1	CONSISTING OF SR. NO.- 2, 7 TO 10
*2	04.005.30.0.00	CR'SHAFT ASSLY.W/O CR'GEAR (UPDATED)	1	CONSISTING OF SR. NO.- 3 TO 6
3	04.005.09.0.00	CRANK SHAFT-KHD	1	
4	04.005.11.0.00	BALANCE WT.	4	
5	02.005.04.0.00	WASHER	8	
6	04.005.12.0.00	SOCKET HEAD BOLT - M12X1.75X60 -10.9	8	
7	50.401.08.025	DOWEL PIN 8X25	1	
8	50.401.08.060	DOWEL PIN 8X60	1	
9	4H.002.01.0.00	CRANK SHAFT GEAR (FINISH/)	1	
10	P2.020.09.0.PR	DEFLECTOR FOR FWE OIL SEAL	1	

TITLE: -CRANKCASE

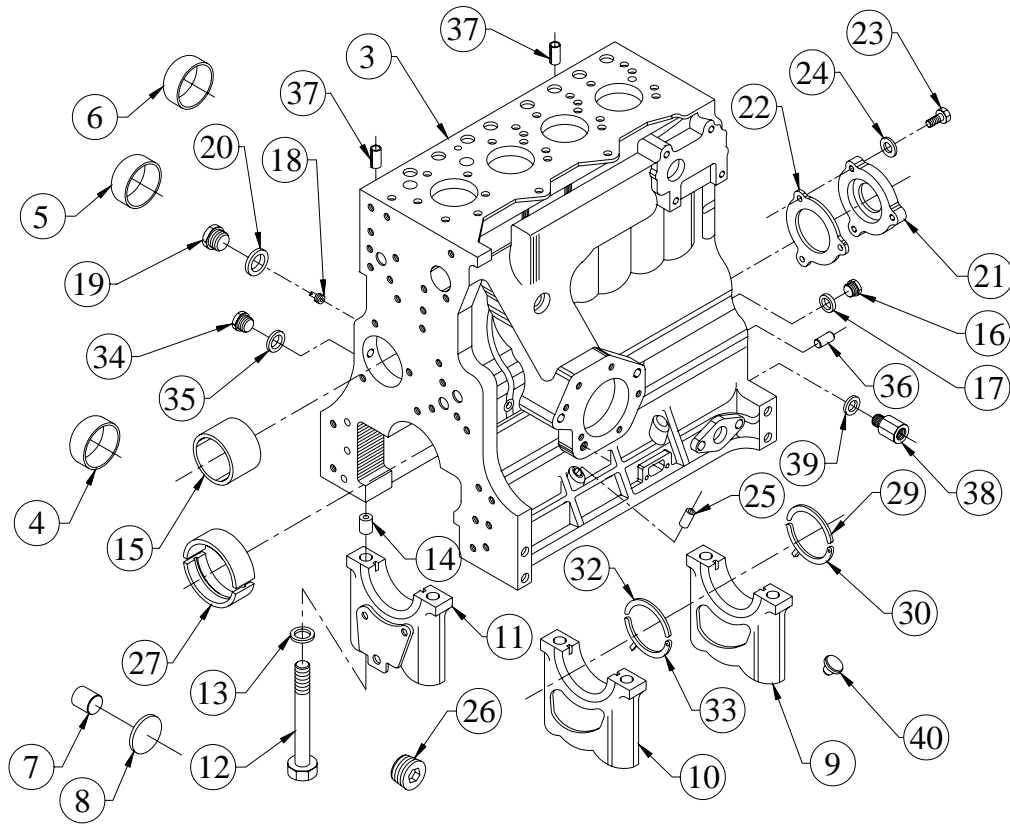
GROUP: - 4H.001...EXP



SR.NO.	PART NO.	DESCRIPTION	QTY.	REMARKS
*1	4H.001.50.0.00	CRANKCASE ASSEMBLY (NON ASBESTOS JOINT)	1	CONSISTING OF SR. NO.- 2, 15 TO 26
*2	4H.001.40.0.00	CRANKCASE WITH MB CAPS (LINE BORE OPERATION)	1	CONSISTING OF SR. NO.- 3 TO 14
3	4H.001.01.0.00	MONOBLOCK CRANKCASE	1	
4	F6.007.34.0.00	SEALING CAP	5	
5	F6.001.58.0.00	SEALING CAP. (40 DIN 443)	2	
6	4H.001.05.0.00	SEALING CAP (52 DIN 443)	3	
7	34.003.07.0.00	CRANK SHAFT PLUG – ALUMINIUM	2	
8	34.003.08.0.00	WASHER FOR ALU.PLUG.	2	
9	03.001.23.0.00	M.B.CAP (FWE) 16.99 DIA.DOWEL HOLE	1	
10	03.001.24.0.00	M.B.CAP (KHD) 16.99DIA DOWEL HOLES	3	
11	4H.001.02.0.00	BEARING CAP (GEAR END)(FINISH)	1	

TITLE: -CRANKCASE

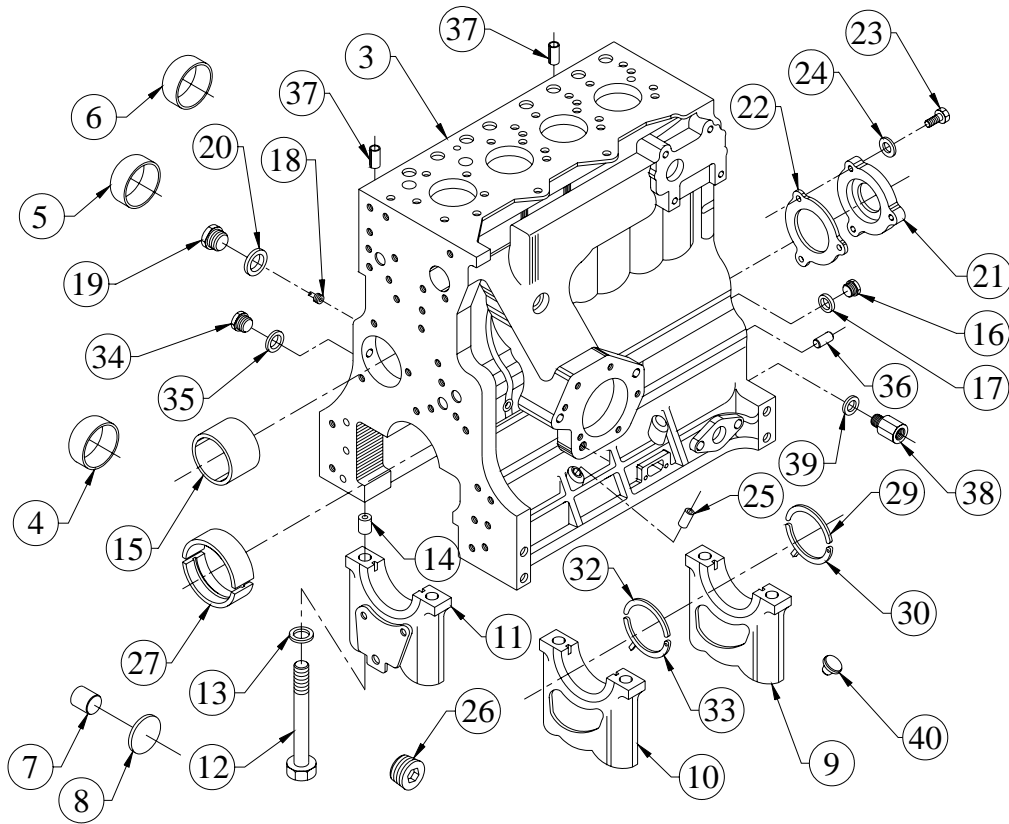
GROUP: - 4H.001...EXP



SR.NO.	PART NO.	DESCRIPTION	QTY.	REMARKS
12	03.001.22.0.00	BOLT FOR MB CAP (HEX HEAD) M14X2X128	10	
13	02.001.04.0.00	WASHER	10	
14	B2.005.16.0.00	HOLLOW DOWEL (M.B.CAP)	10	
15	03.001.04.0.00	CAM BUSH	1	
16	04.001.04.0.00	SCREW PLUG (M20 X 1.5)	1	
17	50.508.18.000	COPPER WASHER (20X24)	1	
18	03.001.07.0.00	SLOTTED PIN	5	
19	50.610.12.000	CORE PLUG	5	
20	50.565.12.000	INTERNAL RUBBER LIP SEALING WASHER -M12- FOR FUEL LINES	5	
21	4H.001.03.0.00	BLANKING PLATE FOR CAM BORE	1	
22	4H.001.14.0.00	JOINT FOR CAM BORE BLANKING PLATE	1	
23	50.003.08.025	SET SCREW - M8X1.25X25 - 8.8	3	
24	50.506.08.000	PLAIN MACHINED WASHER - M8	3	
25	02.037.04.0.00	DIPSTICK GUIDE	1	
26	50.056.06.000	HEADLESS PIPE PLUG 1/2"-14 NPTF	3	

TITLE: -CRANKCASE

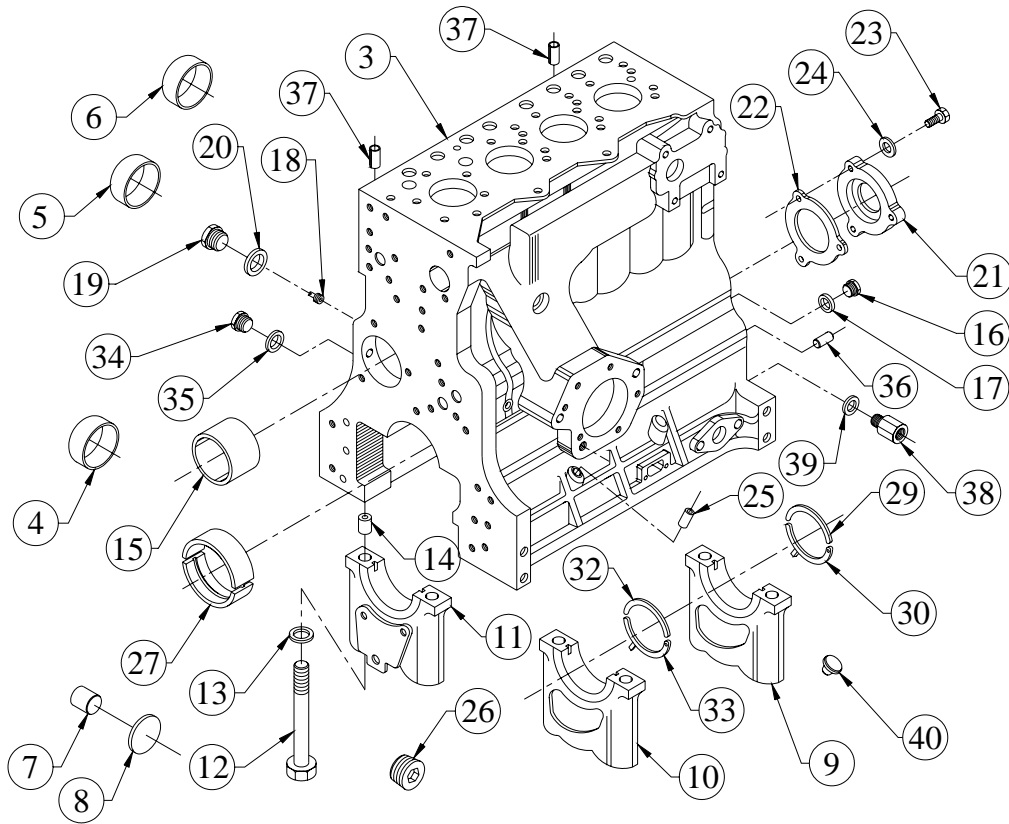
GROUP: - 4H.001...EXP



SR.NO.	PART NO.	DESCRIPTION	QTY.	REMARKS
27	02.001.07.0.00	MAIN BRG TOP & BOTTOM (BEARING PART NO. * M-74400003)	5	
*28	03.001.18.0.00	THRUST RING PAIR-DRIVE END, 102 DIA.)	1	CONSISTING OF SR. NO.- 29 & 30
29	03.001.19.0.00	THRUST WASHER – DRIVE END, TOP	1	
30	03.001.21.0.00	THRUST WASHER (DRIVE END, BOTTOM)	1	
*31	B2.005.22.0.00	THRUST RING PAIR-G.E.	1	CONSISTING OF SR. NO.- 32 & 33
32	B2.005.18.0.00	THRUST RING HALF (G.E.-TOP)	1	
33	B2.005.19.0.00	THRUST RING HALF (G.E.-BOTTOM)	1	
34	50.602.14.000	PLUG (M14X1.5)	1	
35	50.565.14.000	INTERNAL RUBBER LIP SEALING WASHER –M14- FOR FUEL LINES	1	
36	50.401.08.014.	DOWEL	2	

TITLE: -CRANKCASE

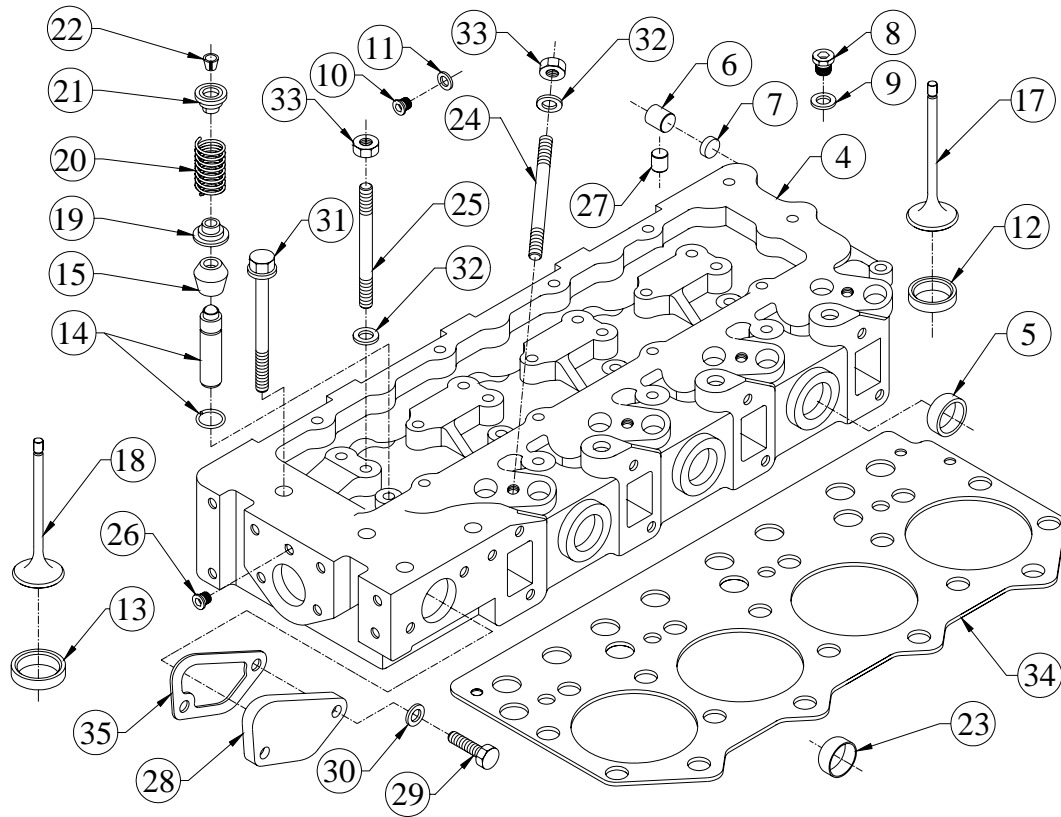
GROUP: - 4H.001...EXP



SR.NO.	PART NO.	DESCRIPTION	QTY.	REMARKS
37	50.540.09.016	SPRING DOWEL PIN	2	
38	4H.235.01.0.00	ADAPTOR FOR L.O. PRESSURE SENSOR (M10 X 1.5 X 1/8" NPTF)	1	
39	50.508.08.000	COPPER WASHER (10X16)	1	
40	48.288.02.0.00	PLUG FOR DIP STICK HOLE	1	
*41	M-074400003	MAIN BEARING SET	1	(5 PAIRS) STD
*42	M-074400013	MAIN BEARING SET	1	0.25 mm U/S
*43	M-074400023	MAIN BEARING SET	1	0.50 mm U/S
*44	M-074400033	MAIN BEARING SET	1	0.75 mm U/S
*45	M-074400043	MAIN BEARING SET	1	1.00 mm U/S
*46	M-074400053	MAIN BEARING SET	1	1.25 mm U/S
*47	M-074400063	MAIN BEARING SET	1	1.50 mm U/S
*48	W-074500003	THRUST WASHER SET	1	CONSISTS 2 HALF RINGS FLYWHEEL END AND GEAR END

TITLE: - CYLINDER HEAD (EXPORT)

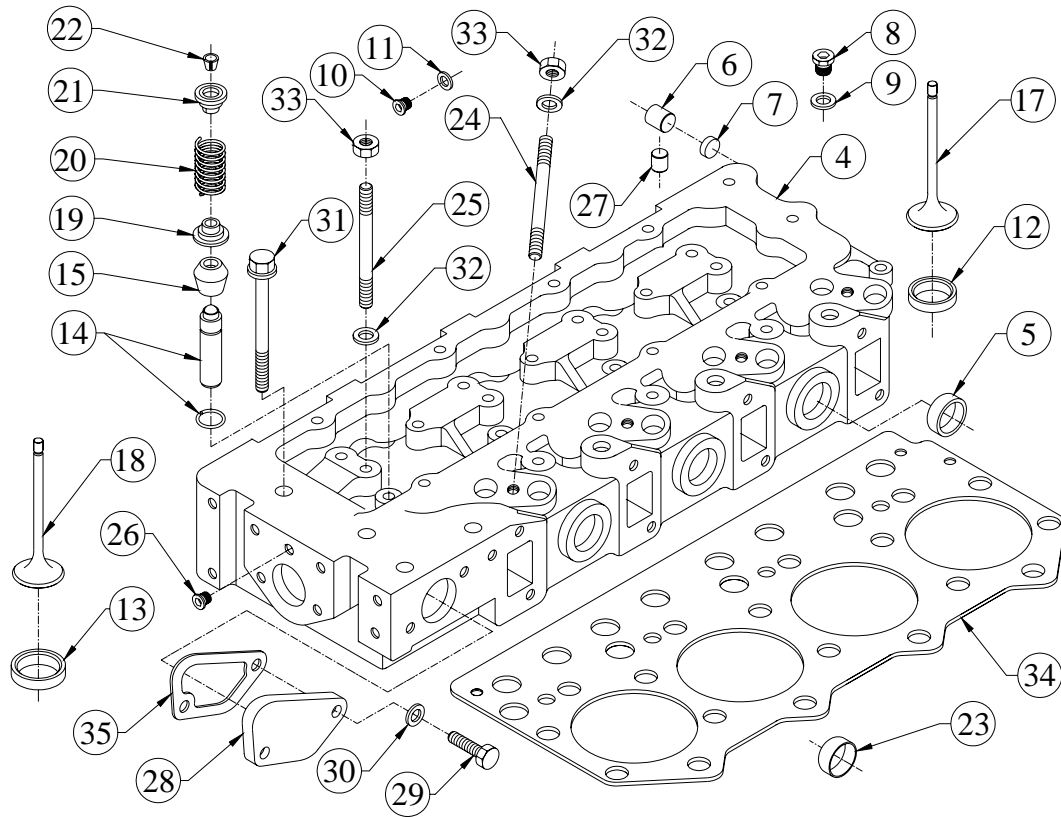
GROUP: - 4H.063...EXP



SR.NO.	PART NO.	DESCRIPTION	QTY.	REMARKS
*1	4H.007.30.0.00	CYLINDER HEAD ASSEMBLY COMPLETE	1	CONSISTING OF SR. NO. 2 & 15 TO 27
*2	4H.007.20.0.00	CYL.HEAD WITH VLV.GUIDE & VLV.SEAT INSERT	1	CONSISTING OF SR. NO. 3 & 12 TO 14
*3	4H.007.10.0.00	CYLINDER HEAD ASSEMBLY-COMPLETE.	1	CONSISTING OF SR. NO. 4 TO 11
4	4H.007.01.0.00	CYLINDER HEAD (FINISH)	1	
5	F6.007.35.0.00	SEALING CAP	3	
6	34.003.07.0.00	CRANK SHAFT PLUG - ALUMINIUM	5	
*7	34.003.08.0.00	WASHER FOR ALU.PLUG.	5	CONSISTING OF SR. NO.- 8 TO 11
8	50.610.16.000.	CORE PLUG-HEXAGONAL SOCKET HEAD (DIN-908)	1	
9	50.508.16.000.	COPPER WASHER (18X22)	1	
10	50.610.24.000.	CORE PLUG	3	

TITLE: - CYLINDER HEAD (EXPORT)

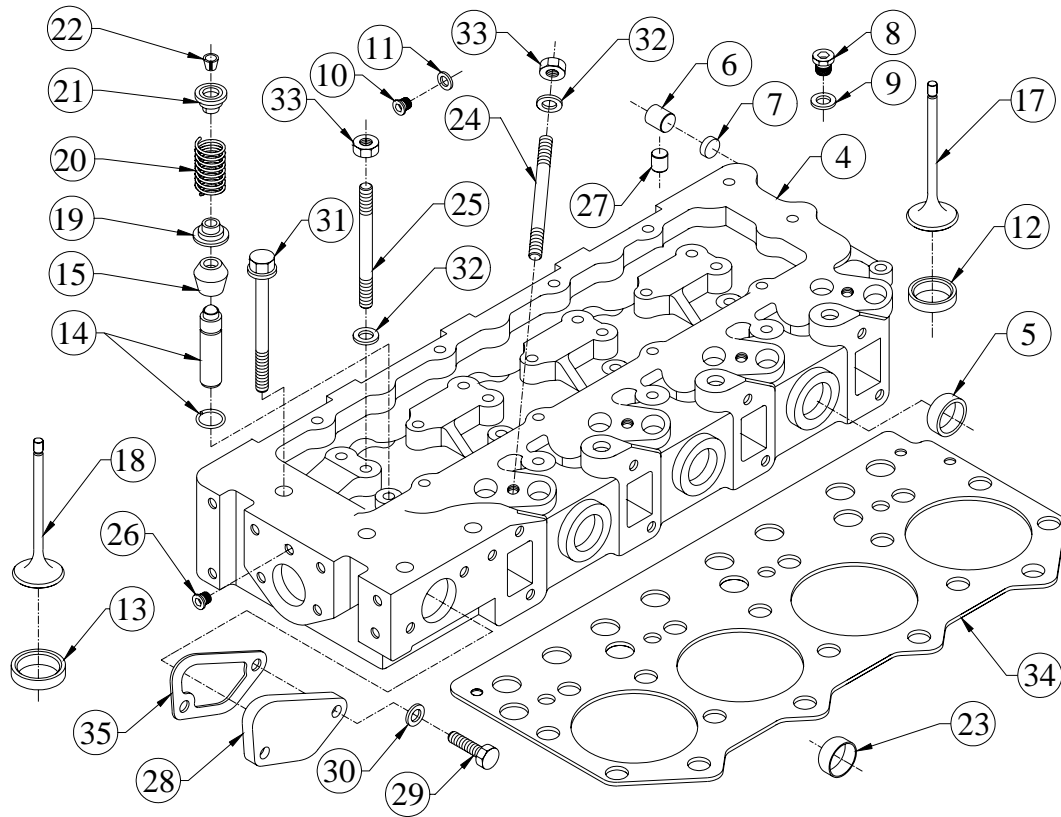
GROUP: - 4H.063...EXP



SR.NO.	PART NO.	DESCRIPTION	QTY.	REMARKS
11	50.508.29.000.	COPPER WASHER (26X32)	3	
12	4H.007.03.9.00	VALVE SEAT INSERT (INLET)	4	
13	4H.007.04.9.00	VALVE SEAT INSERT (EXHAUST)	4	
14	4H.007.38.0.00	ASSEMBLY OF SEMIFINISH VALVE GUIDE & SNAP RING	8	
15	06.631.02.0.00	VALVE SEAL	8	
*16	4H.007.40.0.00	INLET & EXHAUST VALVE PAIR	4	CONSIST OF SR. NO. 17 & 18
17	4H.007.05.0.00	INLET VALVE.	4	
18	4H.007.06.0.00	EXHAUST VALVE.	4	
19	34.013.13.0.00	CUP FOR VALVE SPRING.	8	
20	02.022.13.0.00	VALVE SPRING	8	
21	02.022.11.0.00	VALVE CUP	8	
2	02.022.12.0.00	VALVE COLLET	16	
23	F6.001.58.0.00	SEALING CAP. (40 DIN 443)	1	
24	50.010.10.070.	STUD - M10X1.5X70 - 8.8	4	
25	50.010.10.050.	STUD - M10X1.5X50 - 8.8	4	
26	4H.007.26.0.00	CORE PLUG (FOR CYL.HEAD-EJCB)	1	
27	4H.007.08.0.00	BUTTON FOR INJECTOR YOKE.	4	

TITLE: - CYLINDER HEAD (EXPORT)

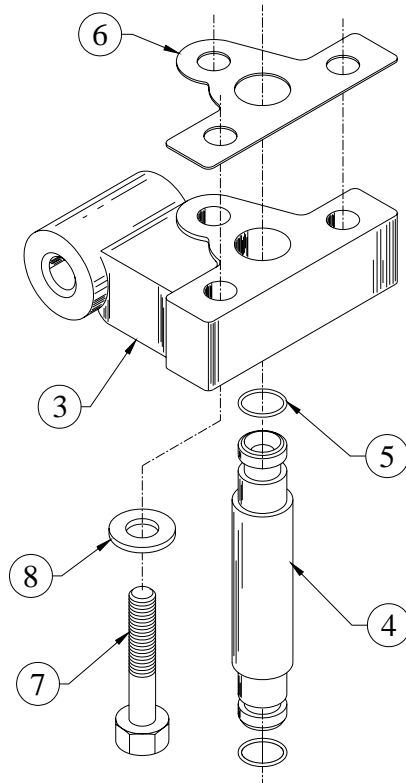
GROUP: - 4H.063...EXP



SR.NO.	PART NO.	DESCRIPTION	QTY.	REMARKS
28	4H.063.01.0.00	BLANKING PLATE FOR WATER OUTLET (ON HEAD)	1	
29	50.003.08.020.	SET SCREW - M8X1.25X20 - 8.8	2	
30	50.506.08.000.	PLAIN MACHINED WASHER - M8	2	
31	4H.007.07.0.00	BOLT FOR CYLINDER HEAD.	18	
32	50.506.10.000.	PLAIN MACHINED WASHER - M10	8	
33	50.006.10.000.	NUT - M10X1.5 - GR.8	8	
34	4H.007.24.0.00	GASKET FOR CYL. HEAD (THICKNESS 1.25)	1	
35	4H.022.11.0.00	JOINT FOR WATER OUTLET MANIFOLD	1	

TITLE:- DELIVERY BODY

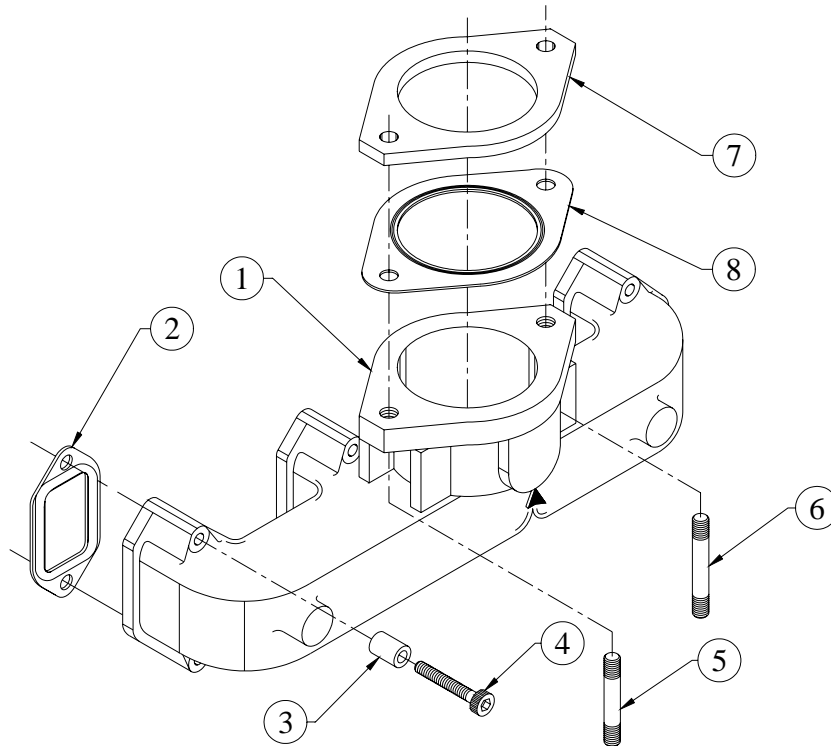
GROUP:- 2H.013...EXP



SR.NO.	PART NO.	DESCRIPTION	QTY.	REMARKS
*1	2H.013.20.0.00	DELIVERY BODY AND JOINT (NON ASBESTOS)	1	CONSISTING OF SR. NO. 2 & 6
*2	2H.013.10.0.00	DELIVERY BODY ASSEMBLY	1	CONSISTING OF SR. NO. 3 TO 5
3	2H.013.01.0.00	DELIVERY BODY (FINISH)	1	
4	2H.014.01.0.00	DELIVERY TUBE	1	
5	2H.014.02.0.00	O RING(FOR DELIVERY TUBE)	2	
6	2H.013.11.0.00	JOINT FOR DELIVERY BODY	1	
7	50.002.08.045.	SET BOLT - M8X1.25X45 - 8.8	3	
8	50.506.08.000.	PLAIN MACHINED WASHER - M8	3	

TITLE: -EXHAUST MANIFOLD

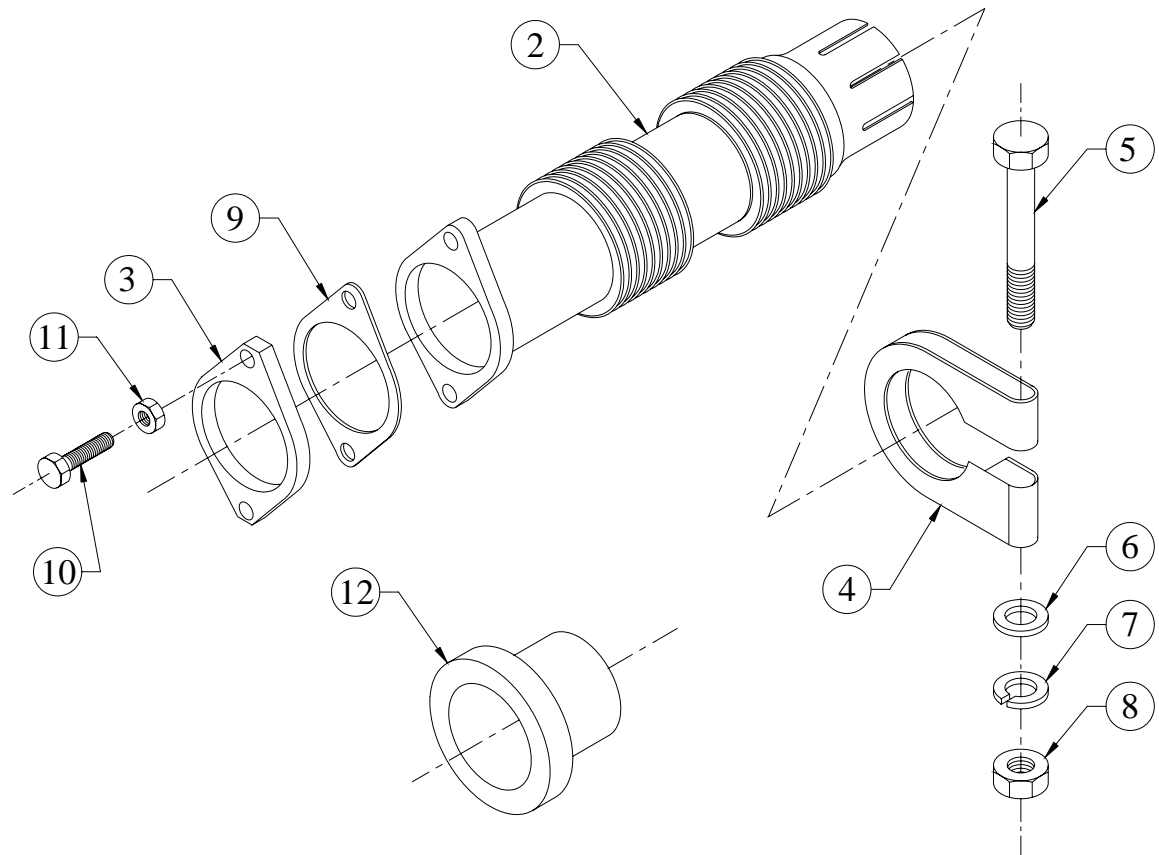
GROUP: - 4H.383



SR.NO.	PART NO.	DESCRIPTION	QTY.	REMARKS
1	4H.383.01.0.00	EXHAUST MANIFOLD	1	
2	P2.036.02.0.00	GASKET FOR EXHAUST MANIFOLD	4	
3	4H.107.02.0.00	SPACZER (FOR EXT.MANIFOLD)	8	
4	50.011.08.075	SOCKET HEAD SCREW - M8X1.25X75 - 8.8	8	
5	50.010.08.030	STUD - M8X1.25X30 - 8.8	1	
6	50.010.08.035	STUD - M8X1.25X35 - 8.8	1	
7	46.357.02.0.00	FLANGE FOE EXPANSION BELLOW 2.5"	1	
8	34.107.06.0.00	JOINT FOR ADAPTOR ON EX.MANIFOLD	1	

TITLE :- EXPANSION BELLOW (2.5'') & MTG.

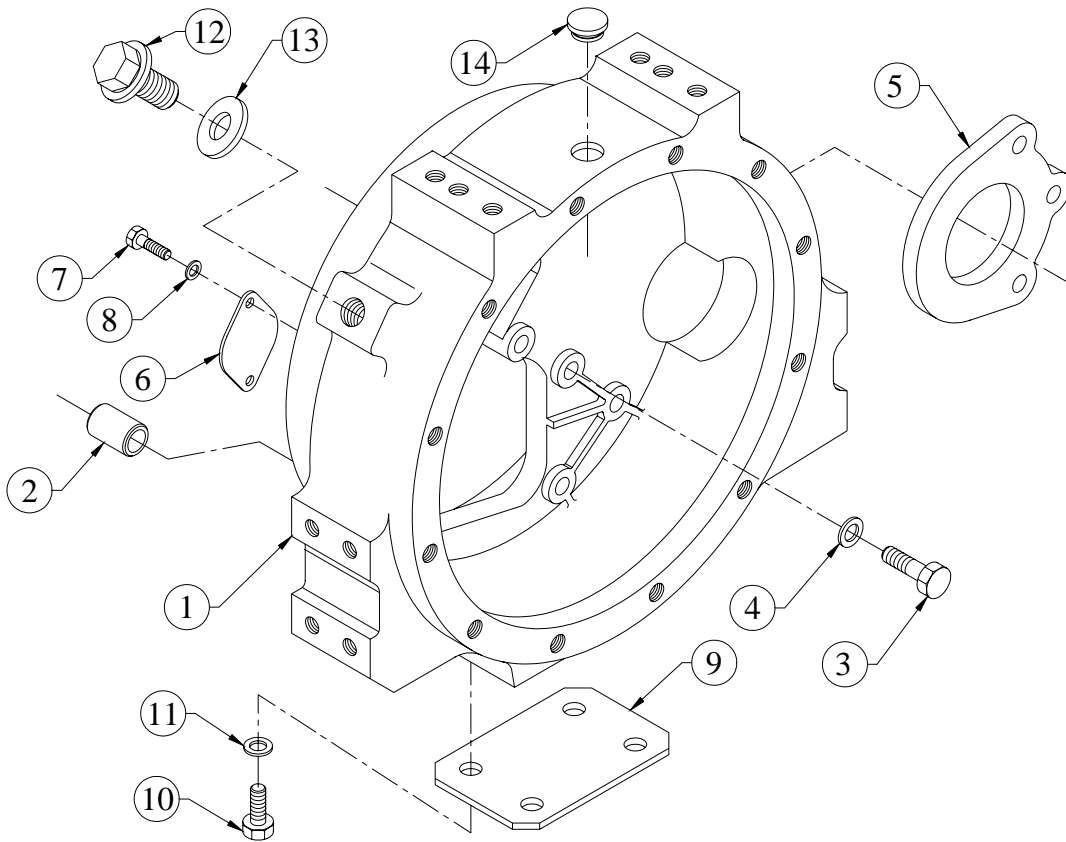
GROUP :- 46.357



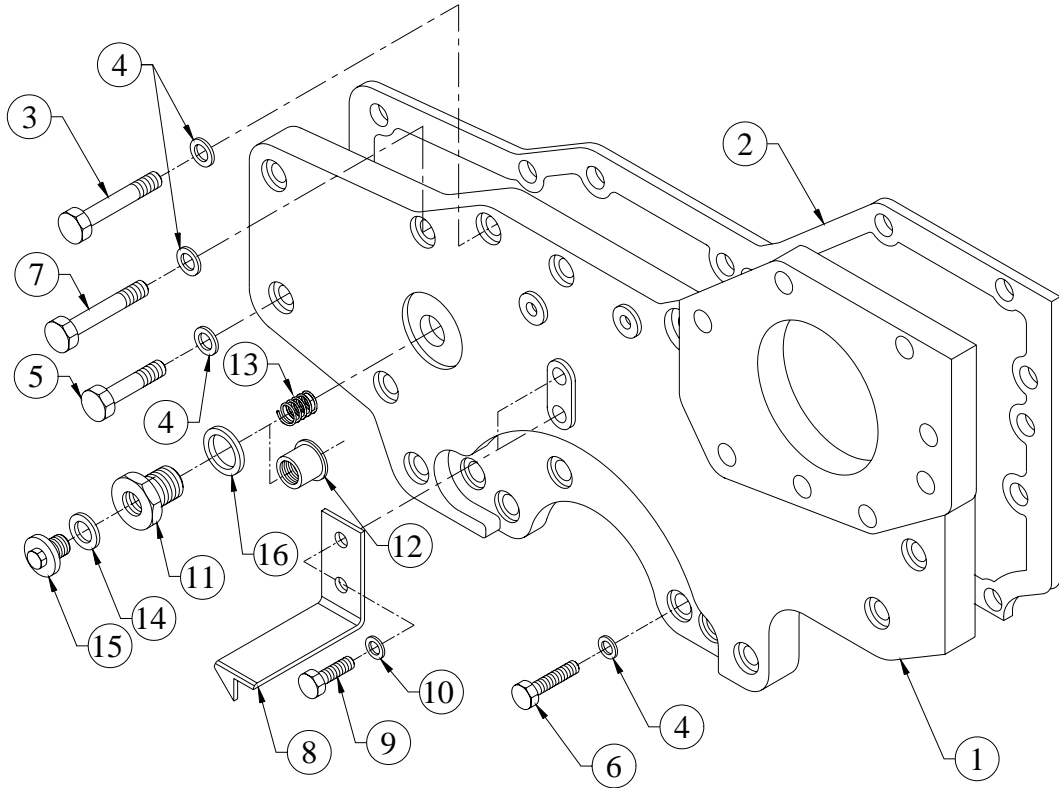
SR.NO.	PART NO.	DESCRIPTION	QTY.	REMARKS
*1	46.357.10.0.00	EXPANSION BELLOW ASSLY 2.5"	1	CONSISTING OF SR. NO.- 2 & 3
2	46.357.01.0.00	EXPANSION BELLOW 2.5"	1	
3	46.357.02.0.00	FLANGE FOE EXPANSION BELLOW 2.5"	1	
4	46.256.05.0.00	SILENSER CLAMP	1	
5	50.002.08.090.	SET BOLT - M8X1.25X90 - 8.8	1	
6	50.506.08.000.	PLAIN MACHINED WASHER - M8	1	
7	50.505.08.000.	SPRING WASHER - M8	1	
8	50.006.08.000.	NUT- M8X1.25 - GR.8	1	
9	34.107.06.0.00	JOINT FOR ADAPTOR ON EX.M'FOLD	1	
10	50.003.08.035.	SET SCREW - M8X1.25X35 - 8.8	2	
11	02.022.24.0.00	NUT(BRASS)	2	
12	46.367.03.0.00	SLEEVE FOR EXHAUST SILENCER(55.2 DIA)	1	

TITLE: - FLYWHEEL HOUSING (SAE3-144.5)

GROUP: - 4H.038



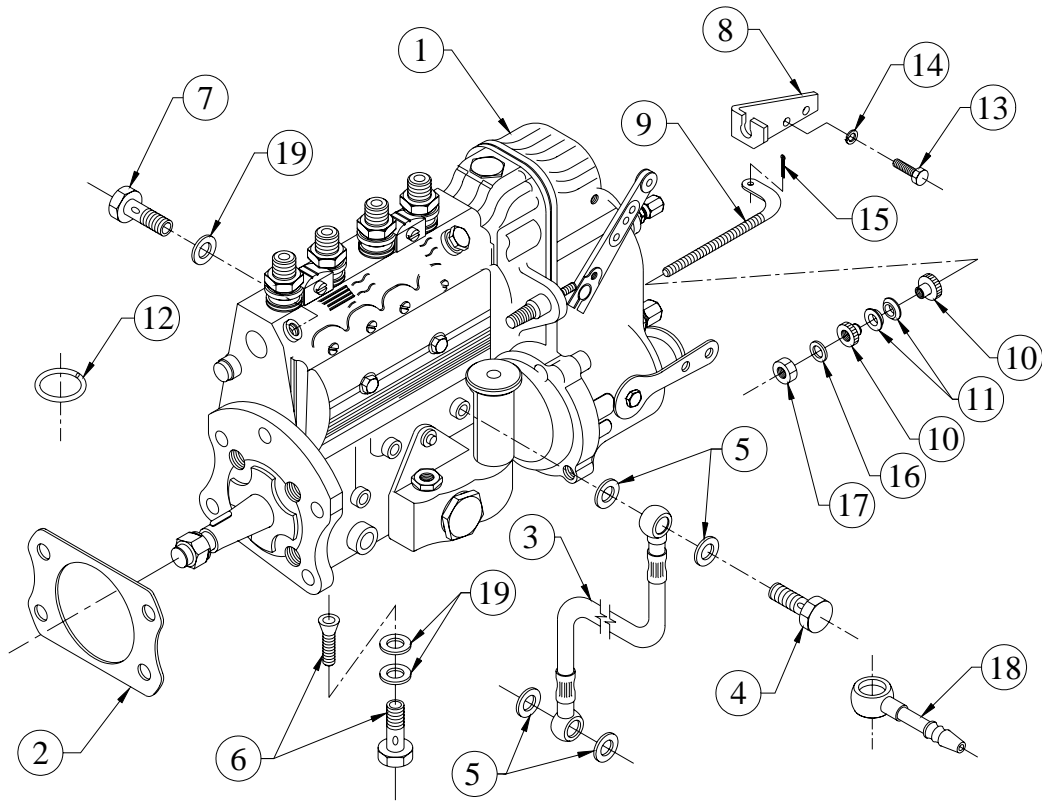
SR.NO.	PART NO.	DESCRIPTION	QTY.	REMARKS
1	4H.038.01.0.00	FLYWHEEL HOUSING (SAE3 -144.5)	1	
2	4H.001.13.0.00	HOLLOW DOWEL (16 DIA)	2	
3	50.052.10.030.	SET BOLT-M10X30-10.9	10	
4	02.024.09.0.00	WASHER	10	
5	4H.038.02.0.00	FLANGE FOR STARTER.	1	
6	4H.038.04.0.00	BLANKING PLATE (FOR FLYWHEEL HOUSING)	1	
7	50.003.06.012.	SET SCREW - M6X1X12 - 8.8	2	
8	50.506.06.000.	PLAIN MACHINED WASHER - M6	2	
9	03.086.02.0.00	COVER FOR FLY WHEEL HSG	1	
10	50.003.08.016.	SET SCREW - M8X1.25X16 - 8.8	4	
11	50.506.08.000.	PLAIN MACHINED WASHER - M8	4	
12	50.602.16.000.	CORE PLUG 16X1.5	1	
13	50.508.15.000.	COPPER WASHER (17X23)	1	
14	F6.016.12.0.00	RUBBER CAP.	1	

TOTAL: - FRONT COVER FOR PG APPLICATION**GROUP: - 4H.179...EXP**

SR.NO.	PART NO.	DESCRIPTION	QTY.	REMARKS
1	4H.179.01.0.00	FRONT COVER(W/O HYD. PUMP MNTG.)	1	
2	2H.037.11.0.00	JOINT (FRONT COVER)	1	
3	50.002.08.100.	SET BOLT - M8X1.25X100 - 8.8	4	
4	50.506.08.000.	PLAIN MACHINED WASHER - M8	18	
5	50.002.08.030.	SET BOLT - M8X1.25X30 - 8.8	4	
6	50.003.08.025.	SET SCREW - M8X1.25X25 - 8.8	5	
7	50.002.08.035.	SET BOLT - M8X1.25X35 - 8.8	5	
8	2H.037.06.0.00	TIMING POINTER	1	
9	50.003.06.012.	SET SCREW - M6X1X12 - 8.8	2	
10	50.506.06.000.	PLAIN MACHINED WASHER - M6	2	
11	03.117.04.0.00	ADAPTOR (FOR TD UNIT)	1	
12	03.014.07.0.00	CUP FOR SPRING	1	
13	03.014.06.0.00	SPRING FOR CUP	1	
14	50.508.27.000.	COPPER WASHER (24X29)	1	
15	34.001.11.0.00	DRAIN PLUG (F)	1	
16	50.508.16.000	COPPER WASHER (18 X 22)	1	

TITLE :- FUEL PUMP 9 MM LIFT

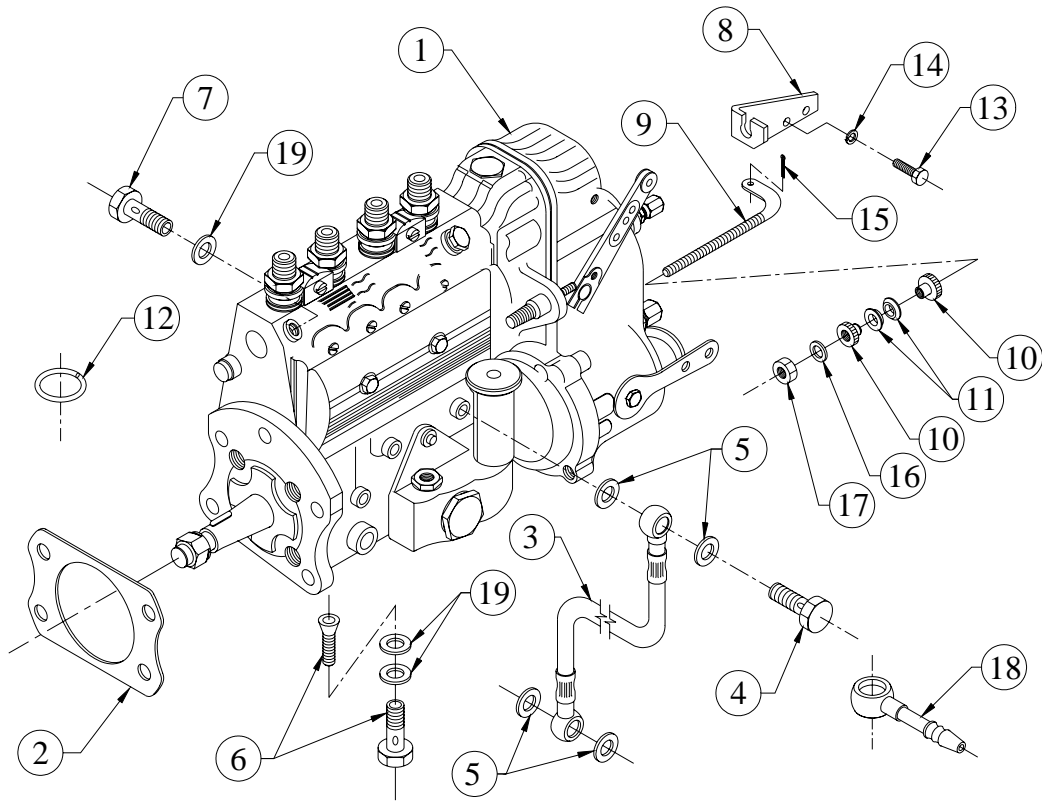
GROUP :- 4H.122...EXP



SR.NO.	PART NO.	DESCRIPTION	QTY.	REMARKS
1	4H.122.10.0.00	FUEL PUMP (F 002 AOZ 095) 9 MM LIFT PG	1	
2	34.016.12.0.00	JOINT FOR FUEL PUMP (NON ASBESTOS)	1	
3	4H.006.01.0.00	L.O.SUPPLY HOSE (FIP)	1	
4	03.660.07.0.00	SPECIAL BANJO BOLT(L.O.SUPPLY TO PUMP)	2	
5	50.508.07.000.	COPPER WASHER (10X14)	4	
6	34.016.15.0.00	BANJO BOLT WITH STRAINER (2 443 456 900)	1	
7	50.504.04.000.	BANJO BOLT - M14X1.5	2	
8	4H.122.01.0.00	BRACKET FOR SPEED ADJUSTMENT	1	
9	4H.122.02.0.00	BAR FOR SPEED ADJUSTMENT	1	
10	03.065.04.0.00	KNURLED NUT	2	
11	03.065.05.0.00	SPHERICAL WASHER	2	
12	03.036.01.0.00	O RING - DIPSTICK (2X5,21515 OR 21511)	2	
13	50.003.06.015.	SET SCREW - M6X1X15 - 8.8	2	

TITLE :- FUEL PUMP 9 MM LIFT

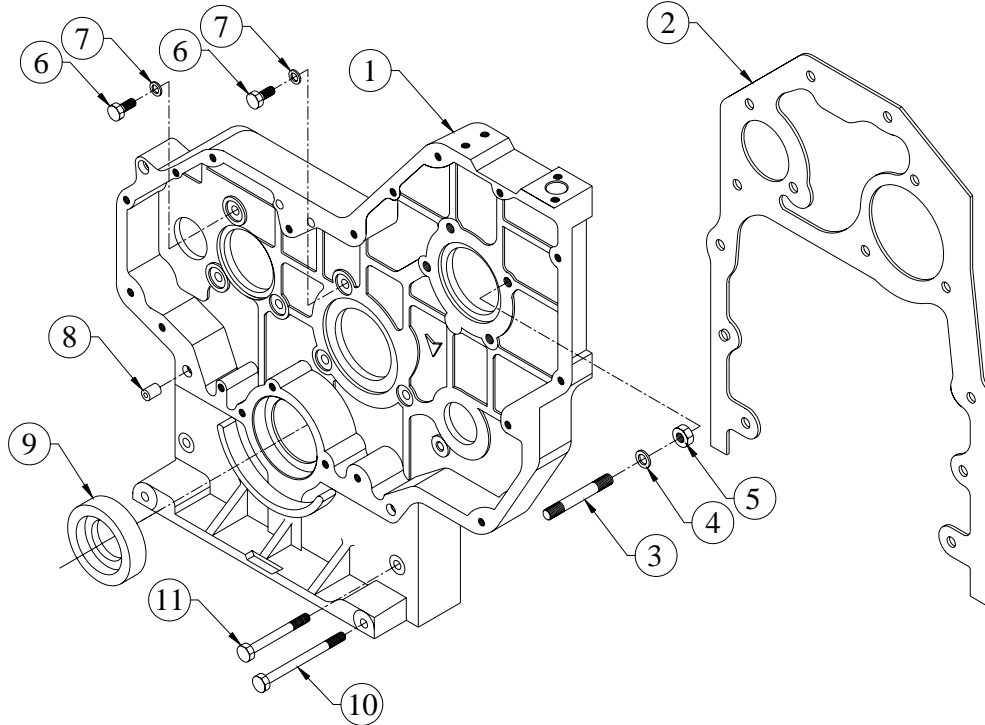
GROUP :- 4H.122...EXP



SR.NO.	PART NO.	DESCRIPTION	QTY.	REMARKS
14	50.505.06.000.	SPRING WASHER - M6	2	
15	50.001.01.010.	SPLIT COTTER PIN - 1.6X10	1	
16	50.548.06.000.	WASHER	1	
17	50.006.08.000.	NUT- M8X1.25 - GR.8	1	
18	06.610.10.0.00	SUB ASSLY OF HOSE TAIL(M14 BANJO)	1	
19	50.565.14.000.	INTERNAL RUBBER LIP SEALING WASHER -M14- FOR FUEL LINES	6	

TITLE: - GEAR CASING WITH DEFLECTOR

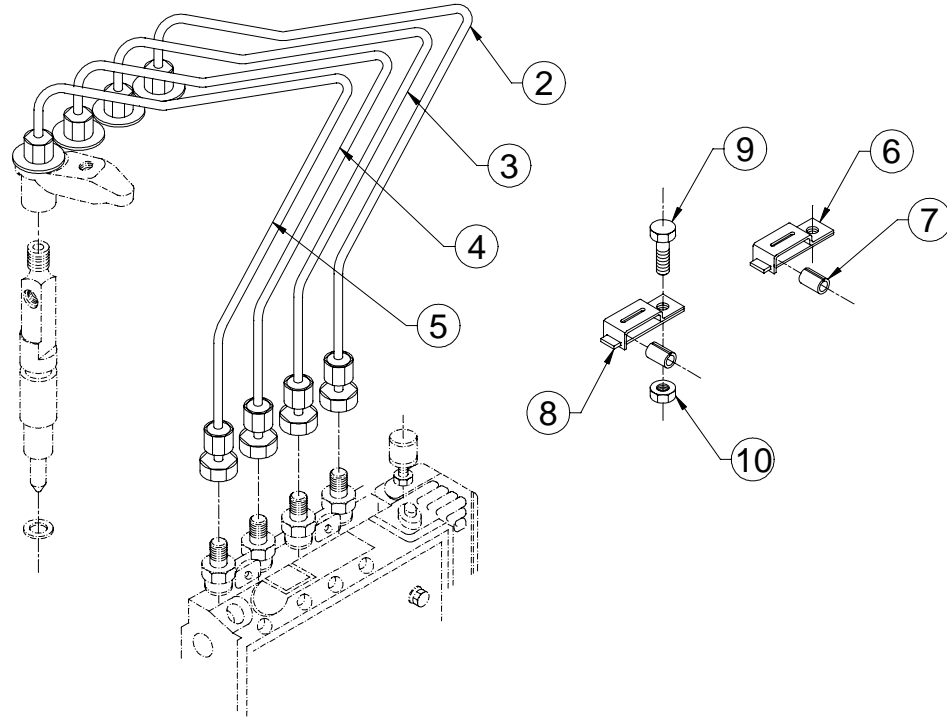
GROUP: - 4H.1074...EXP



SR.NO.	PART NO.	DESCRIPTION	QTY.	REMARKS
1	4H.178.02.0.00	GEAR CASING (MACHINING)	1	
2	2H.005.11.0.00	JOINT FOR GEAR COVER	1	
3	50.010.10.030.	STUD - M10X1.5X30 - 8.8	4	
4	03.001.25.0.00	WASHER (FOR FUEL PUMP MTG)	4	
5	50.006.10.000.	NUT - M10X1.5 - GR.8	4	
6	50.003.08.025.	SET SCREW - M8X1.25X25 - 8.8	6	
7	50.506.08.000.	PLAIN MACHINED WASHER - M8	10	
8	34.001.23.0.00	DOWEL FOR GEAR CASING	2	
9	03.013.06.0.00	OIL SEAL (65X85X13)(CR MAKE)	1	
10	50.002.08.110.	SET BOLT - M8X1.25X110 - 8.8	2	
11	50.002.08.080.	SET BOLT - M8X1.25X80 - 8.8	2	

TITLE:- HIGH PRESSURE PIPE (700 MM)

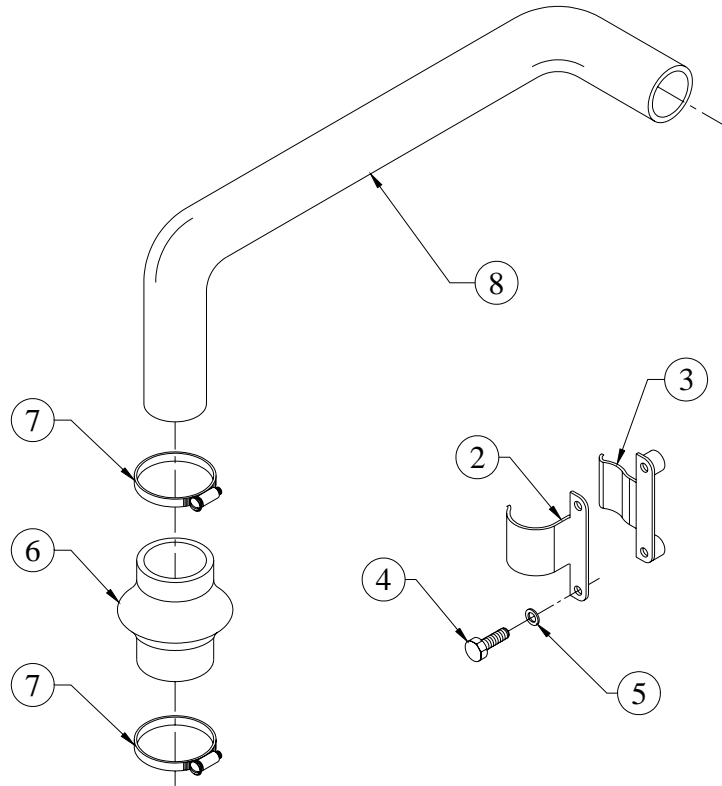
GROUP:- 4H.050



SR.NO.	PART NO.	DESCRIPTION	QTY.	REMARKS
*1	4H.050.60.0.00	H.P.PIPE COMPLETE SET (700 MM)	1	CONSISTING OF SR. NO.- 2 TO 10
2	4H.050.20.0.00	H.P.PIPE ASSLY.BEND,700 MM,CYL.NO.1	1	
3	4H.050.30.0.00	H.P.PIPE ASSLY,BEND,700 MM,CYL.NO.2	1	
4	4H.050.40.0.00	H.P.PIPE ASSLY.,BEND,70 0 MM,CYL.NO.3	1	
5	4H.050.50.0.00	H.P.PIPE ASSLY,BEND,700 MM,CYL.NO.4	1	
6	50.541.02.000.	PIPE CLIP. (FOR 3 PIPES)	1	
7	02.036.03.0.00	RUBBER SLEEVE	7	
8	50.541.03.000.	PIPE CLIP (FOR 4 PIPES)	1	
9	50.003.06.012.	SET SCREW - M6X1X12 - 8.8	2	
10	50.006.06.000.	NUT - M6X1 - GR.8	2	

TITLE :- HOSE CONN.(PG RADIATOR,STAGE 1)

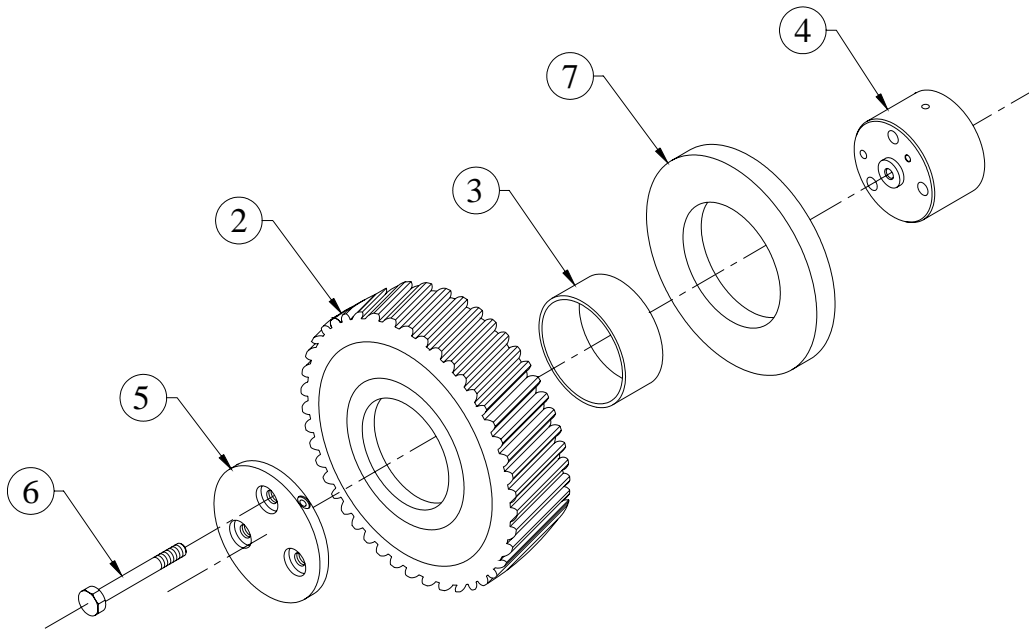
GROUP :- 4H.073.1



SR.NO.	PART NO.	DESCRIPTION	QTY.	REMARKS
*1	4H.073.10.0.00	CLAMP ASSLY FOR PIPE	1	CONSISTING OF SR. NO.- 2 & 3
2	4H.073.04.0.00	UPPER CLAMP FOR PIPE	1	
3	4H.073.05.0.00	LOWER CLAMP FOR PIPE	1	
4	50.002.08.075	SET BOLT - M8X1.25X75 - 8.8	2	
5	50.506.08.000	PLAIN MACHINED WASHER - M8	2	
6	4H.073.02.0.00	HOSE WATER PUMP TO RADIATOR (45X45X80L)	1	
7	50.519.11.000	WORM DRIVE HOSE CLIP (61 MM)	2	
8	4H.073.03.0.00	PIPE RADIATOR TO WATER PUMP INLET	1	

**TITLE :- INTERMEDIATE GEAR AND SUPPORT
(FOR ENGINE W/O AUTOTIMER)**

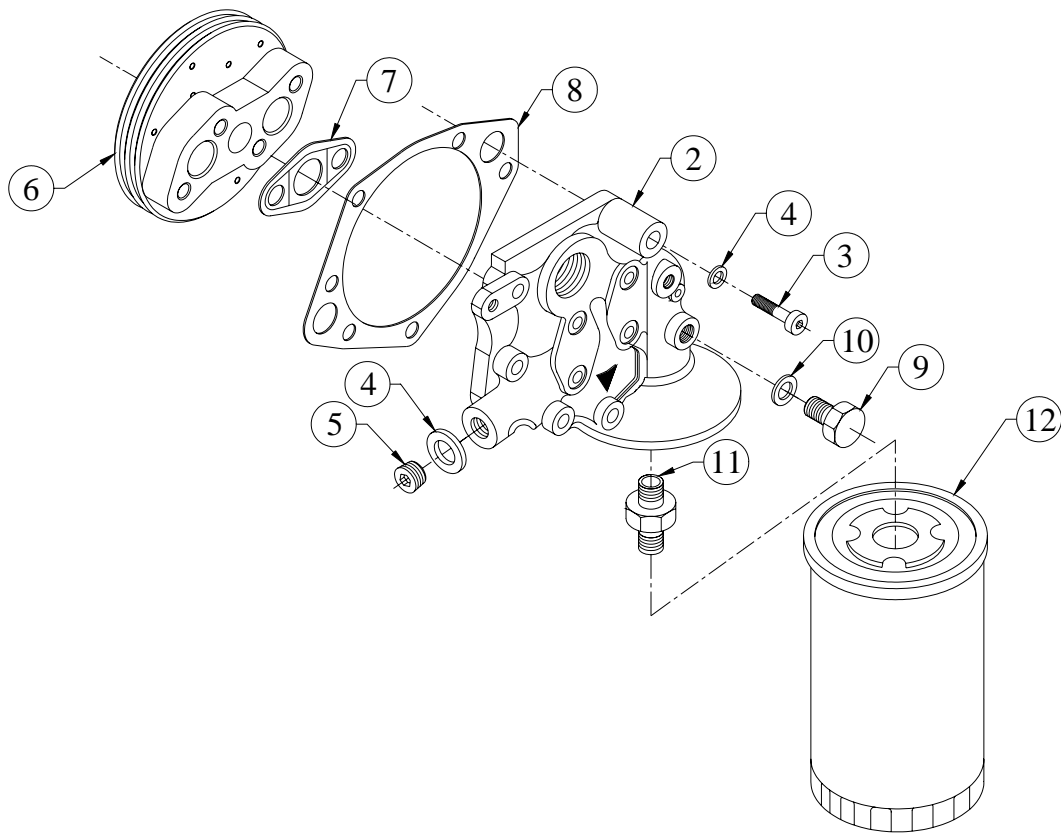
GROUP :- 4H.237



SR.NO.	PART NO.	DESCRIPTION	QTY.	REMARKS
*1	2H.038.10.0.00	ASSLY OF INTERMEDIATE GEAR & BUSH	1	CONSISTING OF SR.NO.2 & 3
2	2H.038.03.0.00	INTERMEDIATE GEAR (FINISH)	1	
3	2H.004.02.9.00	BUSH FOR INTERMEDIATE GEAR (S/F)	1	
4	4H.237.01.0.00	INTERMEDIATE GEAR SUPPORT (TURBO W/O AUTOTIMER)	1	
5	2H.004.04.0.00	RETAINING PLATE (FOR INT.GEAR)	1	
6	50.002.08.070	SET BOLT - M8X1.25X70 - 8.8	3	
7	2H.038.02.0.00	THRUST WASHER	1	

**TITLE:- LUB OIL HEADER & FILTER ASSLY
FOR KIM HOT START**

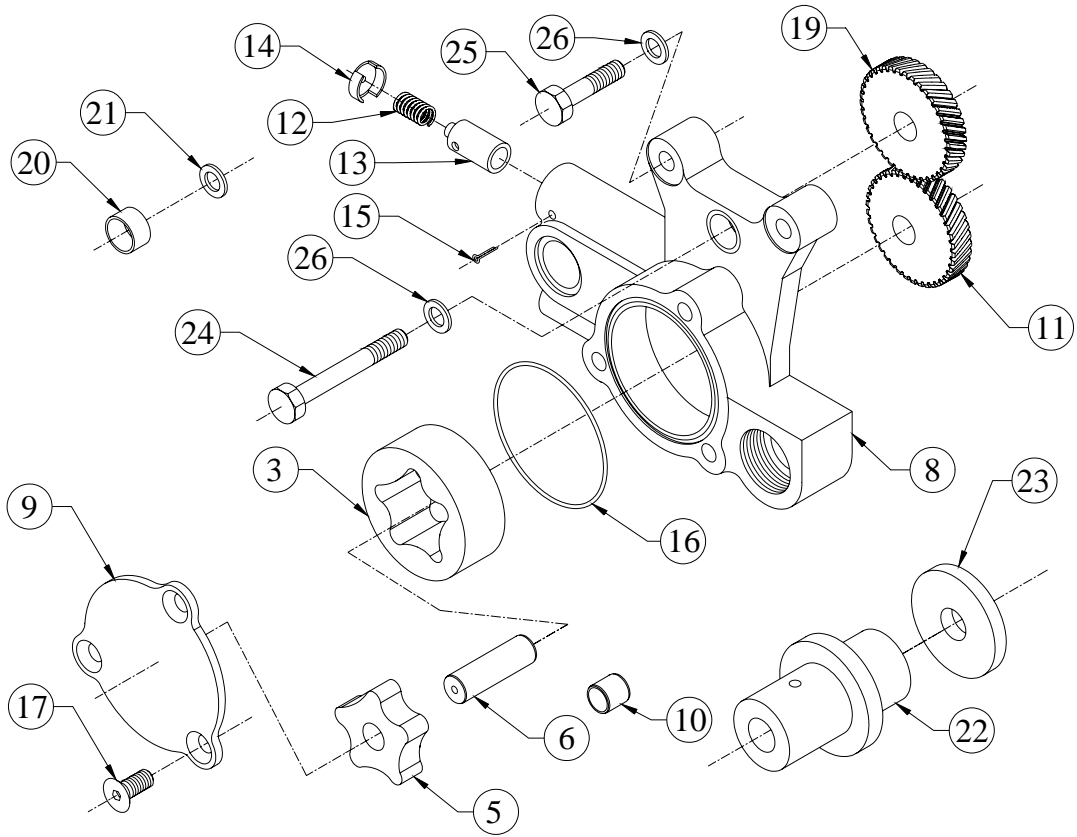
GROUP:- 4H.690



SR.NO.	PART NO.	DESCRIPTION	QTY.	REMARKS
*1	4H.690.30.0.00	LUB OIL COOLER & SPIN ON FILTER S/F KIM HOT START	1	CONSISTING OF SR. NO. 2 TO 12
2	3H.192.01.0.00	HEADER FOR L.O. COOLER & FILTER S/F WATER JACKET HEATING	1	
3	50.011.08.040.	SOCKET HEAD SCREW - M8X1.25X40 - 8.8	4	
4	50.506.08.000.	PLAIN MACHINED WASHER - M8	6	
5	50.056.06.000.	HEADLESS PIPE PLUG 1/2"-14 NPTF	2	
6	3H.007.11.0.00	LUB OIL COOLER (3 PLATE)	1	
7	3H.007.13.0.00	JOINT FOR LUB OIL COOLER (NON ASBESTOS GASKET)	1	
8	3H.007.15.0.00	JOINT FOR HEADER	1	
9	34.001.09.0.00	PLUG FOR OIL GALLERY	1	
10	50.565.10.000.	INTERNAL RUBBER LIP SEALING WASHER -M10- FOR FUEL LINES	1	
11	3H.007.05.0.00	ADAPTOR FOR SPIN ON FILTER	1	
12	06.436.01.0.00	SPIN ON FILTER FOR LUBRICATING OIL	1	

TITLE :- LUBE.OIL PUMP

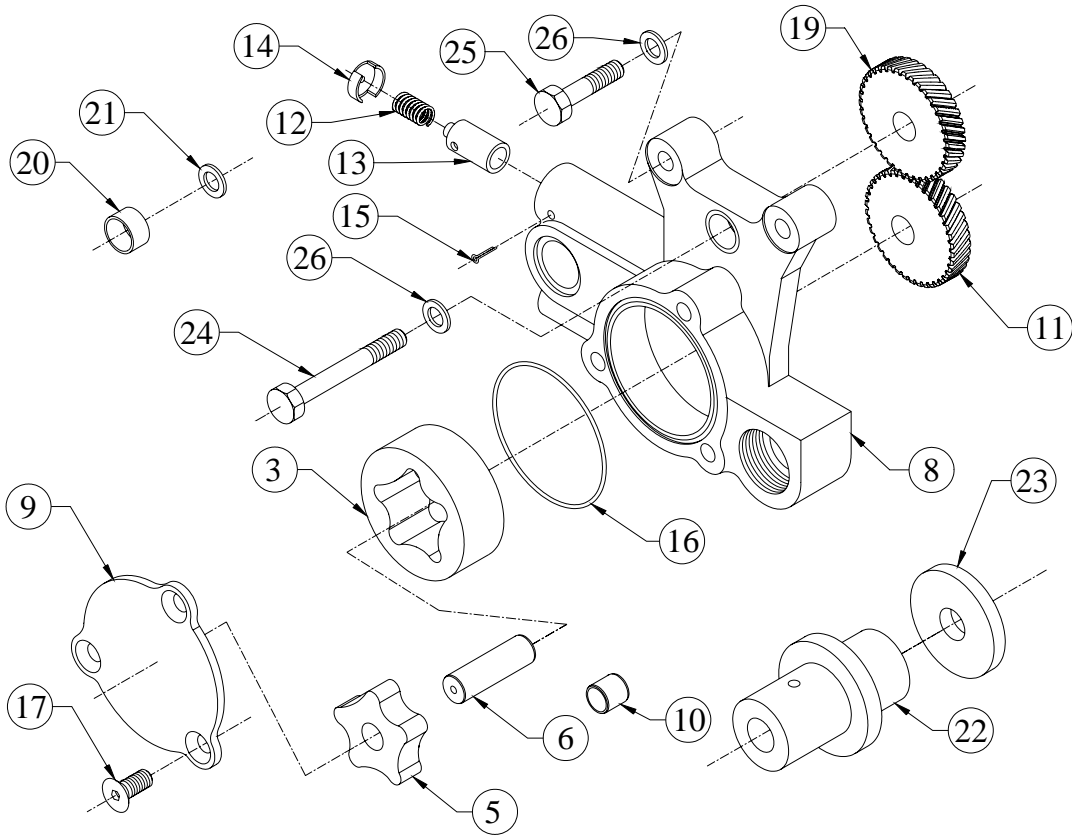
GROUP :- 3H.005



SR.NO.	PART NO.	DESCRIPTION	QTY.	REMARKS
*1	3H.005.50.0.00	LUB OIL PUMP SUB ASSEMBLY	1	CONSIST. OF SR. NO. 2,18 21 TO 24
*2	3H.005.10.0.00	LUBE.OIL PUMP ASSLY.	1	CONSIST. OF SR. NO. 3,4, & 7
3	03.010.17.0.00	OUTER ROTOR	1	
*4	3H.005.40.0.00	ROTOR SUB ASSLY.(W/O KEY)	1	CONSIST. OF SR. NO. 5 & 6
5	03.010.22.0.00	INNER ROTOR	1	
6	03.010.23.0.00	SHAFT FOR INNER ROTOR	1	
*7	3H.005.90.0.00	LUB OIL PUMP ASSEMBLY KIT	1	CONSIST. OF SR. NO. 8 TO 17
8	3H.005.01.0.00	L.O.PUMP BODY(COMPACT VERSION)(FINISH)	1	
9	06.010.02.0.00	COVER PLATE	1	
10	03.010.05.0.00	BUSH FOR L.O.PUMP BODY	1	
11	3H.005.04.0.00	LUB.OIL PUMP DRIVING GEAR(FINISH)	1	
12	03.010.14.0.00	SPRING FOR RELIEF VALVE	1	

TITLE :- LUBE.OIL PUMP

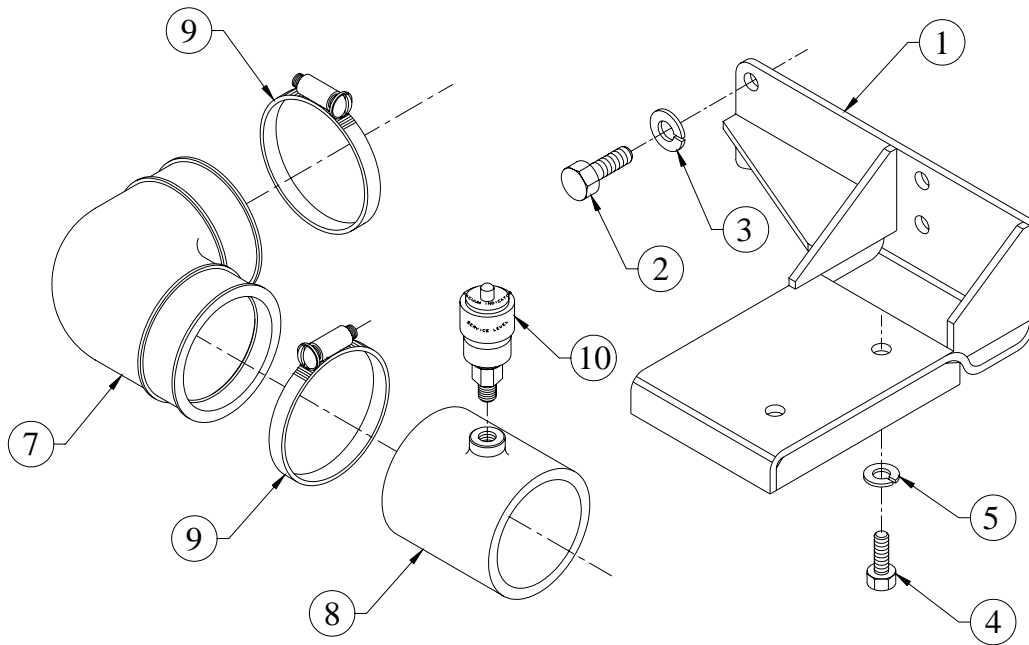
GROUP :- 3H.005



SR.NO.	PART NO.	DESCRIPTION	QTY.	REMARKS
13	03.010.13.0.00	RELIEF VALVE	1	
14	03.010.15.0.00	CUP FOR SPRING	1	
15	50.036.07.010.	SPLIT COTTER PIN - 1/8"X1-1/2"	1	
16	03.010.11.0.00	O RING - L.O.PUMP (1.57X65,21508)	1	
17	06.010.01.0.00	COUNTER SUNK SOCKET HEAD SCREW.	3	
*18	3H.005.30.0.00	SUB.ASSLY.OF L.O.PUMP INT.GEAR AND BUSH.	1	CONSIST. OF SR. NO. 19 & 20
19	3H.005.03.0.00	INTERMEDIATE GEAR (FOR L.O.PUMP) (FINISH)	1	
20	34.014.12.0.00	BUSH FOR LEVER	1	
21	02.024.38.0.00	WASHER (ROCKER LEVER)	1	
22	4H.372.01.0.00	SHAFT FOR LUB OIL PUMP (INTERMEDIATE GEAR)	1	
23	4H.372.02.0.00	HARD WASHER (FOR INT. GEAR)	1	
24	50.002.08.075.	SET BOLT - M8X1.25X75 - 8.8	1	
25	50.002.08.035.	SET BOLT - M8X1.25X35 - 8.8	2	
26	50.506.08.000.	PLAIN MACHINED WASHER - M8	3	

TITLE:- MOUNTING FOR DRY TYPE AIR CLEANER (04.586 /04.587)

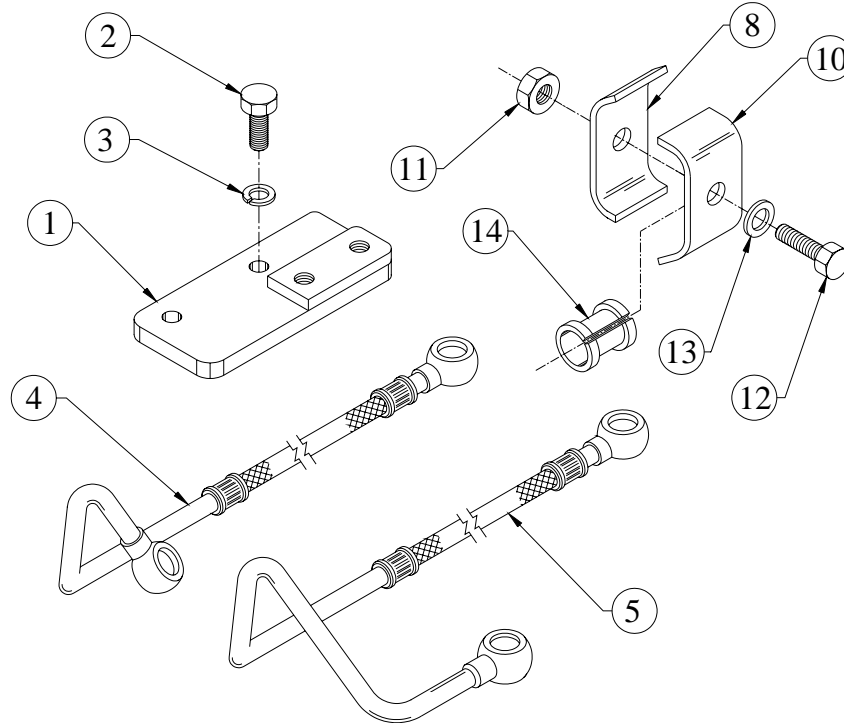
GROUP:- 4H.404...EXP



SR.NO.	PART NO.	DESCRIPTION	QTY.	REMARKS
1	4H.404.01.0.00	BRACKET FORT AIR CLEANER MOUNTING	1	
2	50.003.10.025.	SET SCREW - M10X1.5X25 - 8.8	4	
3	50.505.10.000.	SPRING WASHER - M10	4	
4	50.003.08.020.	SET SCREW - M8X1.25X20 - 8.8	2	
5	50.505.08.000.	SPRING WASHER - M8	2	
*6	4H.404.10.0.00	SUBASSEMBLY OF HOSE	1	CONSISTING OF SR. NO. 7 & 8
7	4H.404.02.0.00	HOSE FOR AIR CLEANER	1	
8	04.588.03.0.00	ADAPTOR FOR RESTRICTION INDICATOR	1	
9	48.305.07.0.00	JUPITER WORM DRIVE CLAMP,TYPE 603, 80mm DIA (S/F 80mm HOSE O.D)	2	
10	04.588.05.0.00	RESTRICTION INDICATOR (M10 x 1.5)	1	

TITLE: -MOUNTING FOR SPIN-ON TYPE FUEL FILTER ON INLET MANIFOLD

GROUP: - 4H.399.1



SR.NO.	PART NO.	DESCRIPTION	QTY.	REMARKS
1	4H.399.05.0.00	PLATE FOR SPIN-ON FUEL FILTER (ON INLET MANIFOLD)	1	
2	50.003.08.025	SET SCREW - M8X1.25X25 - 8.8	2	
3	50.505.08.000	SPRING WASHER - M8	2	
4	4H.399.02.0.00	FUEL PIPE FUEL FILTER TO FUEL PUMP	1	
5	4H.399.03.0.00	FUEL PIPE FEED PUMP TO FUEL FILTER	1	
*6	4H.031.20.0.00	CLAMP ASSLY FOR FUEL PIPES	1	CONSISTING OF SR. NO. 7 & 14
*7	4H.031.30.0.00	CLAMP ASSEMBLY (WITHOUT RUBBER SLEEVE)	1	CONSISTING OF SR. NO. 8, 9 & 12, 13
8	4H.031.06.0.00	CLAMP	1	
*9	4H.031.10.0.00	CLAMP SUB ASSLY	1	CONSISTING OF SR. NO. 10 & 11
10	4H.031.06.0.00	CLAMP	1	
11	50.006.06.000	NUT - M6X1 - GR.8	1	

TITLE:- INJECTOR ASSLY

GROUP:- 2H.023

Nozzle Holder
KBAL...



SR.NO.	KOEL PART NO.	DESCRIPTION	QTY.	MICO PART NO.
4	2H.023.24.0.00	Adjusting washer 0.80 mm thick	as reqd.	2 430 100 525
4	2H.023.25.0.00	Adjusting washer 0.84 mm thick	as reqd.	2 430 100 527
4	2H.023.26.0.00	Adjusting washer 0.88 mm thick	as reqd.	2 430 100 529
4	2H.023.27.0.00	Shims 0.92 mm thick	as reqd.	2 430 100 531
4	2H.023.28.0.00	Adjusting washer 0.96 mm thick	as reqd.	2 430 100 533
4	2H.023.29.0.00	Shims 1.00 mm thick	as reqd.	2 430 100 535
4	2H.023.30.0.00	Adjusting washer 1.04 mm thick	as reqd.	2 430 100 537
4	2H.023.31.0.00	Shims 1.08 mm thick	as reqd.	2 430 100 539
4	2H.023.32.0.00	Adjusting washer 1.12 mm thick	as reqd.	2 430 100 541

TITLE:- INJECTOR ASSLY

GROUP:- 2H.023

Nozzle Holder
KBAL...



SR.NO.	KOEL PART NO.	DESCRIPTION	QTY.	MICO PART NO.
4	2H.023.33.0.00	Shims 1.16 mm thick	as reqd.	2 430 100 543
4	2H.023.34.0.00	Adjusting washer 1.20 mm thick	as reqd.	2 430 100 545
4	2H.023.35.0.00	Shims 1.24 mm thick	as reqd.	2 430 100 547
4	2H.023.36.0.00	Adjusting washer 1.28 mm thick	as reqd.	2 430 100 549
4	2H.023.37.0.00	Shims 1.32 mm thick	as reqd.	2 430 100 551
4	2H.023.38.0.00	Adjusting washer 1.36 mm thick	as reqd.	2 430 100 553
4	2H.023.39.0.00	Shims 1.40 mm thick	as reqd.	2 430 100 555
4	2H.023.40.0.00	Adjusting washer 1.44 mm thick	as reqd.	2 430 100 557
4	2H.023.41.0.00	Shims 1.48 mm thick	as reqd.	2 430 100 559

TITLE:- INJECTOR ASSLY

GROUP:- 2H.023

Nozzle Holder
KBAL...



SR.NO.	KOEL PART NO.	DESCRIPTION	QTY.	MICO PART NO.
4	2H.023.51.0.00	Shims 1.88 mm thick	as reqd.	2 430 100 579
4	2H.023.52.0.00	Adjusting washer 1.92 mm thick	as reqd.	2 430 100 581
4	2H.023.53.0.00	Shims 1.96 mm thick	as reqd.	2 430 100 583
8	2H.023.54.0.00	Distance piece	1	2 430 136 015
2	2H.023.55.0.00	Pressure bolt	1	2 433 124 035
7	2H.023.56.0.00	Nozzle cap nut	1	2 433 314 120
3	2H.023.57.0.00	Spring	1	2 434 619 064
12*	10.029.07.0.00	Nozzle sealing washer	1	2 439 999 032
4	2H.023.62.0.00	Shim	as reqd.	9 431 030 149
4	2H.023.63.0.00	Shim	as reqd.	9 431 030 150
4	2H.023.64.0.00	Shim	as reqd.	9 431 030 151

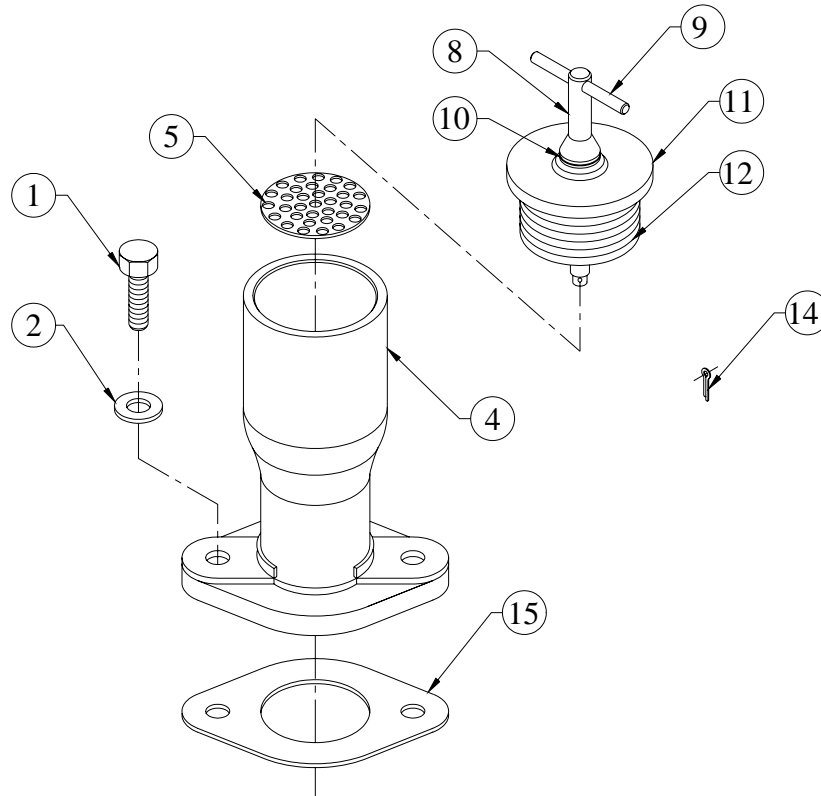
TITLE:- INJECTOR ASSLY

GROUP:- 2H.023

Nozzle Holder
KBAL...



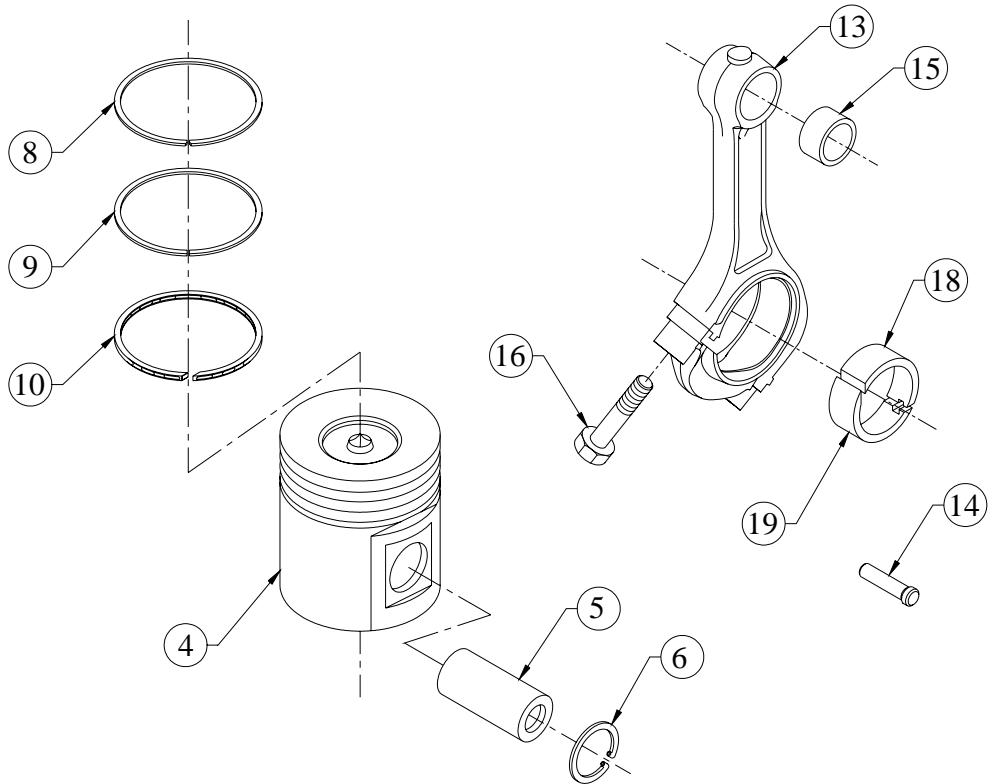
SR.NO.	KOEL PART NO.	DESCRIPTION	QTY.	MICO PART NO.
4	2H.023.65.0.00	Shim	as reqd.	9 431 030 152
4	2H.023.66.0.00	Shim	as reqd.	9 431 030 153
4	2H.023.67.0.00	Shim	as reqd.	9 431 030 154
4	2H.023.68.0.00	Shim	1	9 431 030 155
4	2H.023.69.0.00	Shim	as reqd.	9 431 030 156
4	2H.023.70.0.00	Shim	as reqd.	9 431 030 157
11*	2H.023.21.0.00	Nozzle	1	F 002 C30 003

TITLE:- OIL FILLING BODY**GROUP:- 4H.027...EXP**

SR.NO.	PART NO.	DESCRIPTION	QTY.	REMARKS
1	50.003.08.025	SET SCREW - M8X1.25X25 - 8.8	2	
2	50.506.08.000.	PLAIN MACHINED WASHER - M8	2	
*3	4H.027.20.0.00	ASSEMBLY OF OIL FILLING BODY WITH JOINT	1	CONSISTING OF SR. NO.- 4 TO 6, 15
4	4H.027.01.0.00	OIL FILLING BODY	1	
5	34.036.50.0.00	PERFORATED DISC.	1	
*6	34.036.60.0.00	CAP ASSLY	1	CONSISTING OF SR. NO.- 7, 10 TO 14
*7	03.592.10.0.00	SUB-ASSLY.OF CLAMPING SCREW	1	CONSISTING OF SR. NO.- 8 & 9
8	03.592.01.0.00	CLAMPING SCREW FOR CAP	1	
9	34.036.16.0.00	PIN	1	
10	34.036.17.0.00	WASHER	1	
11	34.036.14.0.00	CAP	1	
12	03.592.02.0.00	RUBBER BUSH FOR CAP	1	

TITLE :- PISTON & CONNECTING ROD ASSLY.

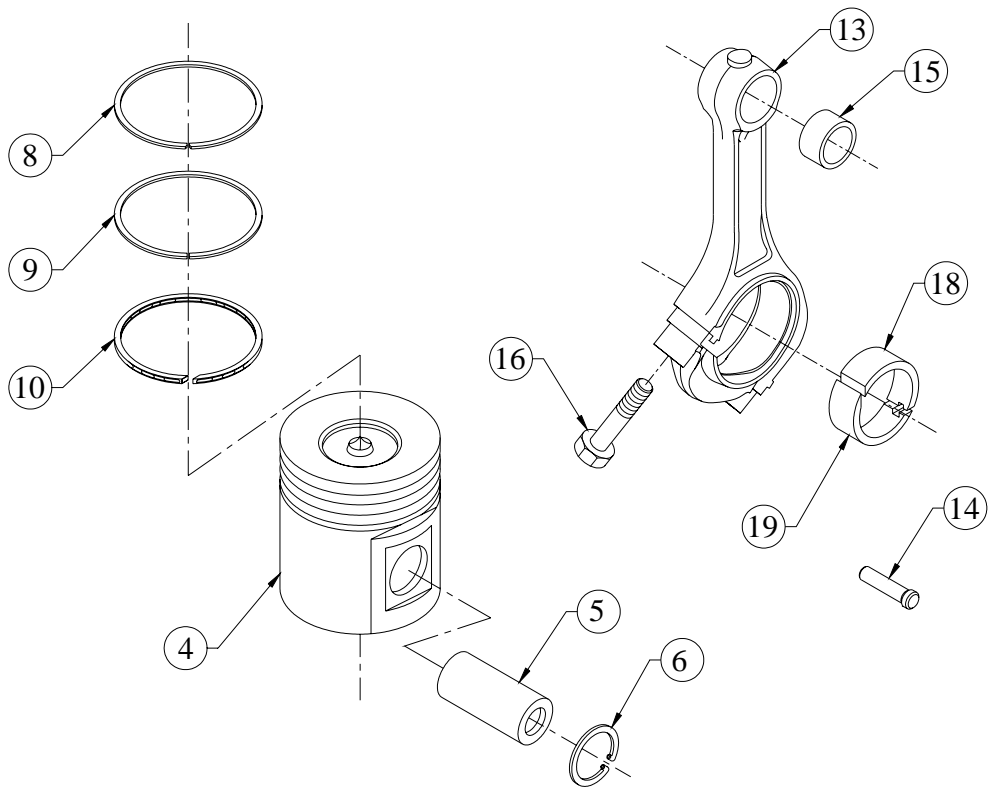
GROUP :- 2H.009



SR.NO.	PART NO.	DESCRIPTION	QTY.	REMARKS
*1	2H.009.40.0.00	PISTON & CON.ROD ASSEMBLY	1	CONSISTING OF SR. NO. 2, 11, 17
*2	2H.009.10.0.00	PISTON ASSEMBLY -COMPLETE	1	CONSISTING OF SR. NO. 3 & 7
*3	2H.009.20.0.00	PISTON WITH PIN AND CIRCLIP.	1	CONSISTING OF SR. NO. 4 TO 6
4	2H.009.01.0.00	PISTON 105 MM DIA (3 RING)A-GROUP	1	
5	34.025.24.0.00	PISTON PIN	1	
6	50.502.35.000.	CIRCLIP (INTERNAL)-35 MM	2	
*7	2H.009.30.0.00	PISTON RING SET (105 DIA.)	1	CONSISTING OF SR. NO. 8 TO 10
8	2H.009.02.0.00	TOP RING (105 DIA)	1	
9	2H.009.03.0.00	COMPRESSION RING (105 DIA)	1	
10	2H.009.04.0.00	OIL CONTROL RING (105 DIA)	1	
*11	02.021.30.0.00	CON.ROD ASSLY.(WITH L.E.BRG.)	1	CONSISTING OF SR. NO. 12

TITLE :- PISTON & CONNECTING ROD ASSLY.

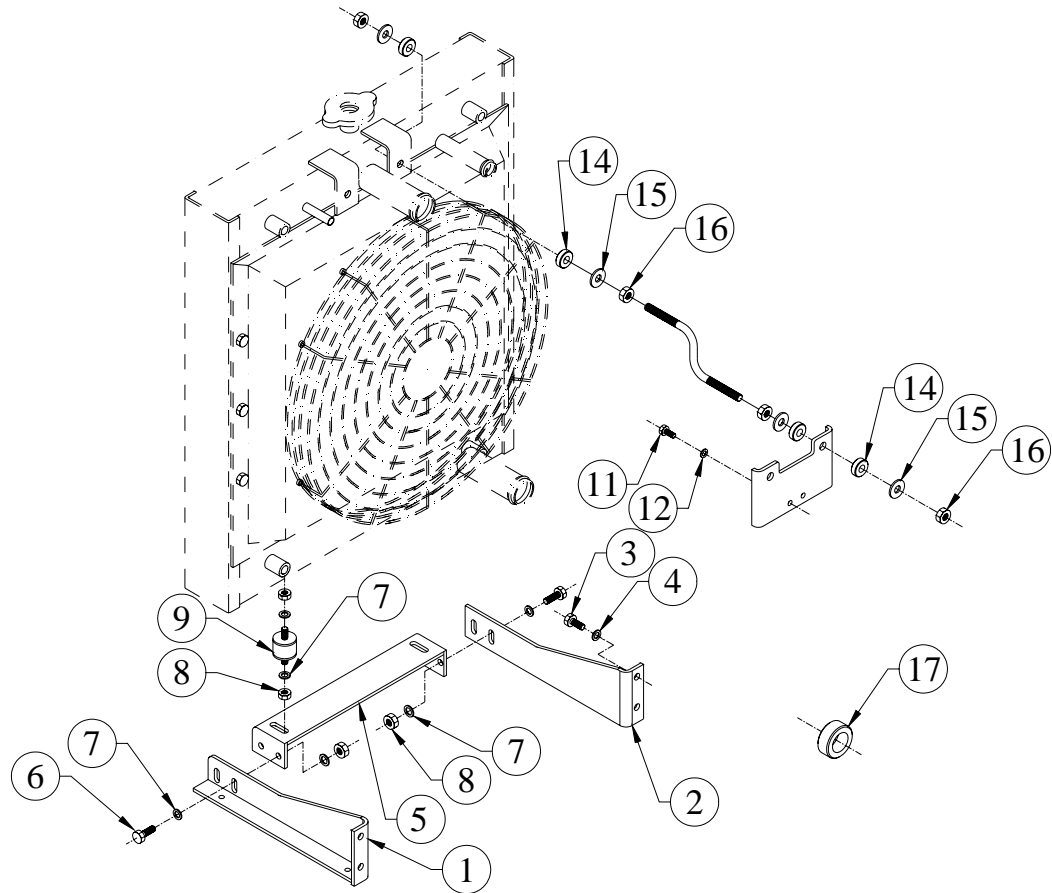
GROUP :- 2H.009



SR.NO.	PART NO.	DESCRIPTION	QTY.	REMARKS
*12	02.021.20.0.00	CON ROD ASSEMBLY (WITHOUT LE BRG.)	1	CONSISTING OF SR. NO. 13 TO 16
13	02.021.01.0.00	CON.ROD (W/O MASS BALANCING)	1	
14	02.021.02.0.00	LOCATING PIN	1	
15	02.021.03.9.00	SMALL END BUSH (S/F)	1	
16	02.021.04.0.00	CON.ROD BOLT	2	
*17	02.021.71.0.00	ASSY.OF L.E BRG.(TOP & BOTTOM)STD (BEARING PART NO. *B – 093400003)	1	CONSISTING OF SR. NO. 18 & 19
18	02.021.05.0.00	LARGE END BEARING (TOP) STD.	1	
19	02.021.06.0.00	LARGE END BEARING (BOTTOM) STD.	1	
*20	B-093400003	L. E. BEARING SET	1	(2 PAIRS) STD.
*21	B-093400013	L.E. BEARING SET	1	0.25 mm U/S
*22	B-093400023	L.E. BEARING SET	1	0.50 mm U/S
*23	B-093400033	L.E. BEARING SET	1	0.75 mm U/S
*24	B-093400043	L.E. BEARING SET	1	1.00 mm U/S
*25	B-093400053	L.E. BEARING SET	1	1.25 mm U/S
*26	B-093400063	L.E. BEARING SET	1	1.50 mm U/S

TITLE :- RADIATOR MOUNTING

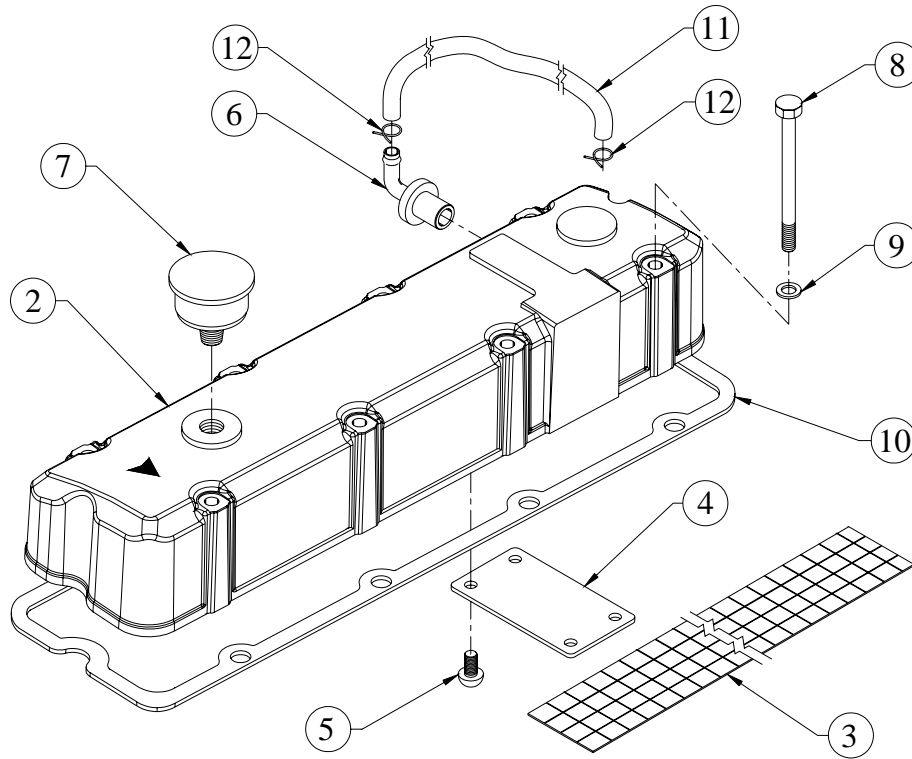
GROUP :- 4H.406.1



SR.NO.	PART NO.	DESCRIPTION	QTY.	REMARKS
1	4H.406.01.0.00	RADIATOR SUPPORT (F.I.P. SIDE)	1	
2	4H.406.02.0.00	RADIATOR SUPPORT (STARTER SIDE)	1	
3	50.003.10.020	SET SCREW M10X1.5X20 – 8.8	4	
4	65.061.15.0.00	HARD WASHER	4	
5	4H.081.03.0.00	CROSS MEMBER FOR RADIATOR SUPPORT	1	
6	50.003.10.030	SET SCREW M10X1.5X30 – 8.8	4	
7	50.548.10.000	SPECIAL WASHER	8	
8	50.006.10.000	NUT M10X1.5 – GR.8	8	
9	48.213.08.0.00	ANTI-VIBRATION MTG. BOTTOM, RADIATOR R.	2	
10	4H.406.03.0.00	BRACKET FOR STAY ROD	1	
11	50.003.08.020	SET SCREW M8X1.25X20 – 8.8	2	
12	50.548.08.000	SPECIAL PLAIN MACHINED WASHER	2	
13	4H.406.04.0.00	STAY (FOR RADIATOR)	2	

**TITLE: -ROCKER COVER FOR PCV
ARRANGEMENT**

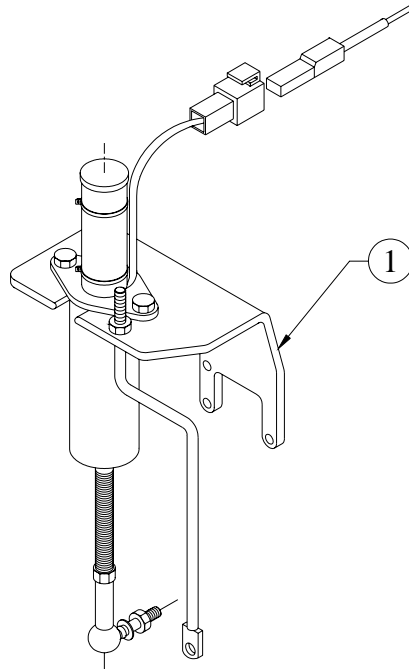
GROUP: - 4H.1152...EXP



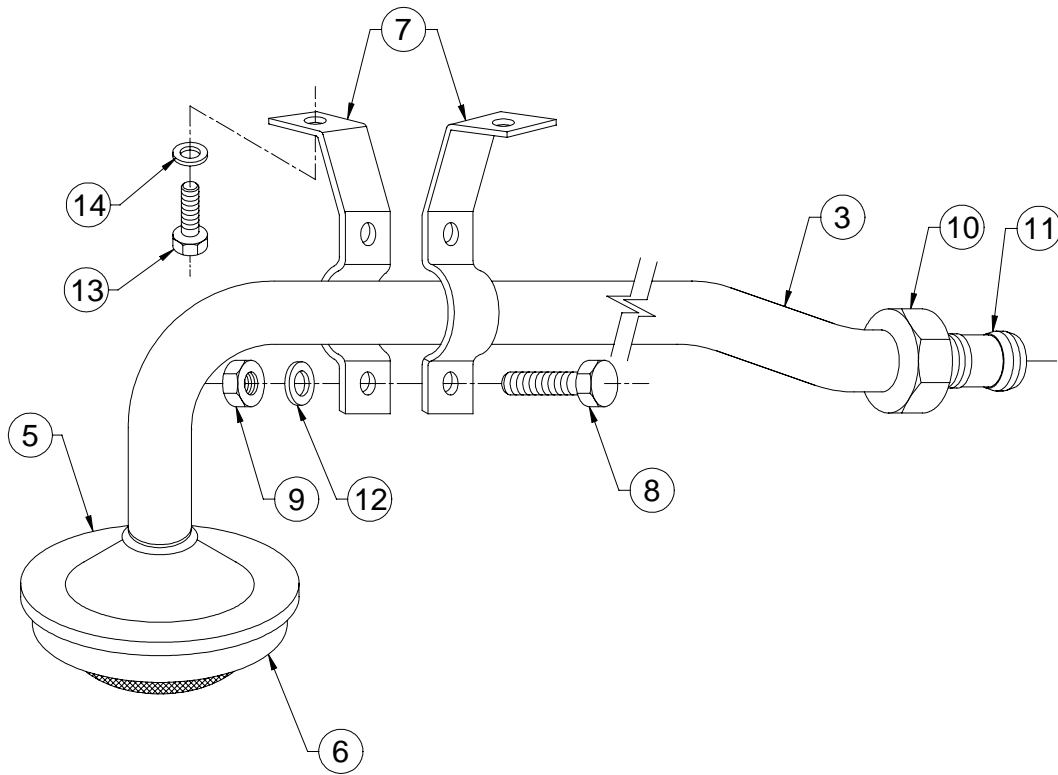
SR.NO.	PART NO.	DESCRIPTION	QTY.	REMARKS
*1	4H.1152.20.0.00	SUB ASM OF ROCKER COVER & BREATHER INLET ASM	1	CONSISTING OF SR. NO.- 2 TO 7
2	4H.1152.01.0.00	ROCKER COVER (MACHINING)	1	
3	2H.204.02.0.00	WIRE MESH	1	
4	4H.139.02.0.00	DEFLECTOR PLATE	1	
5	10.046.02.0.00	P K DRIVE SCREW 1/8"X3/8" (RIVET)	4	
6	2H.203.10.0.00	ASSEMBLY FOR BREATHER INLET	1	
7	4H.139.05.0.00	AIR CLEANER FOR PCV	1	
8	50.002.08.100	SET BOLT - M8X1.25X100 - 8.8	8	
9	50.506.08.000	PLAIN MACHINED WASHER - M8	8	
10	4H.009.11.0.00	JOINT FOR ROCKER COVER	1	
11	3H.313.02.0.00	FLEXIBLE PIPE	1	
12	2H.204.03.0.00	CLIP (SUITABLE FOR 12 DIA PIPE)	2	

**TITLE: - STOP SOLENOID ASSEMBLY 12 VDC
FOR MICO PUMP ENRGIES
TO RUN WITHOUT TIMER**

GROUP: - 3H.135.1



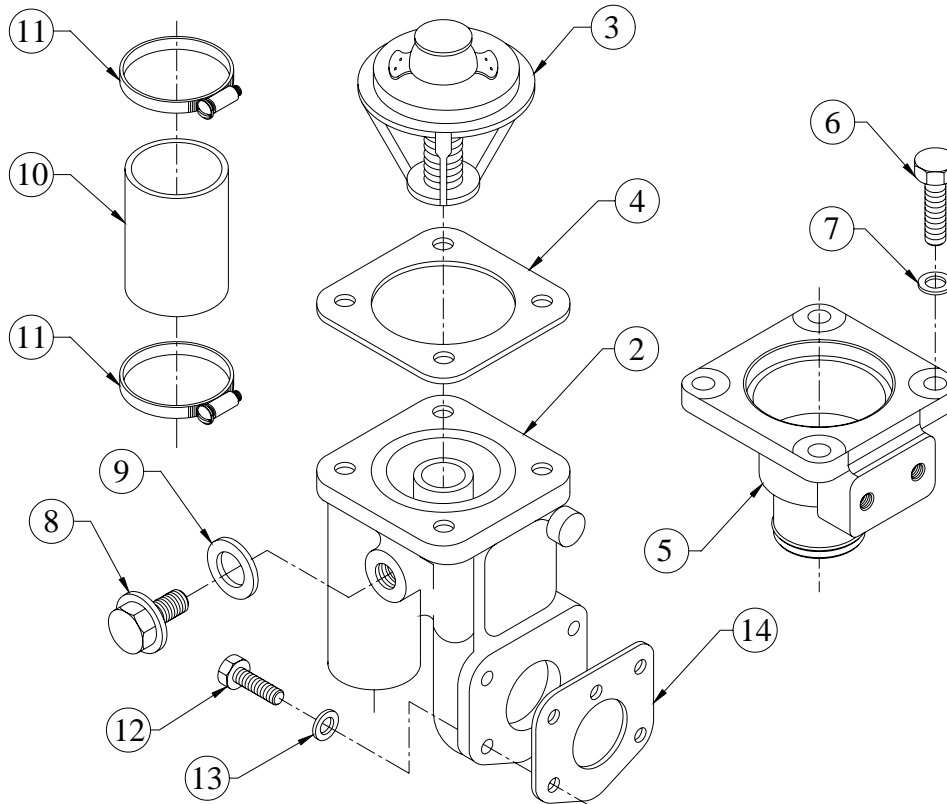
SR.NO.	PART NO.	DESCRIPTION	QTY.	REMARKS
1	3H.135.20.0.00	STOP SOLENOID ASSEMBLY 12V D.C. FOR MICO PUMP ENRGIES TO RUN WITHOUT TIMER	1	

TITLE :- SUCTION TUBE (SHEET METAL SUMP)**GROUP :- 4H.064**

SR.NO.	PART NO.	DESCRIPTION	QTY.	REMARKS
*1	4H.064.10.0.00	SUCTION TUBE ASSLY. (COMPLETE WASHER (SHEET))	1	CONSISTING OF SR. NO. 2 & 7 TO 12
*2	4H.064.20.0.00	SUCTION TUBE ASSLY.(SHEET METAL SUMP)	1	CONSISTING OF SR. NO. 3 & 4
3	4H.064.01.0.00	PIPE FOR SUCTION TUBE.	1	
*4	04.011.10.0.00	LUB OIL STRAINER ASSLY	1	CONSISTING OF SR. NO. 5,6
5	04.011.02.0.00	BOTTOM PLATE	1	
6	04.011.03.0.00	STRAINER BASKET	1	
7	03.011.04.0.00	CLIP FOR PIPE	2	
8	50.003.06.012.	SET SCREW - M6X1X12 - 8.8	2	
9	50.006.06.000	NUT - M6X1 - GR.8	2	
10	03.011.02.0.00	UNION NUT	1	
11	03.011.03.0.00	DOUBLE CONE RING	1	
12	50.506.06.000	PLAIN MACHINED WASHER - M6	2	
13	50.003.08.016	SET SCREW - M8X1.25X16 - 8.8	2	
14	50.506.08.000	PLAIN MACHINED WASHER - M8	2	

TITLE:- THERMOSTAT AND HOUSING ASSEMBLY (USA)

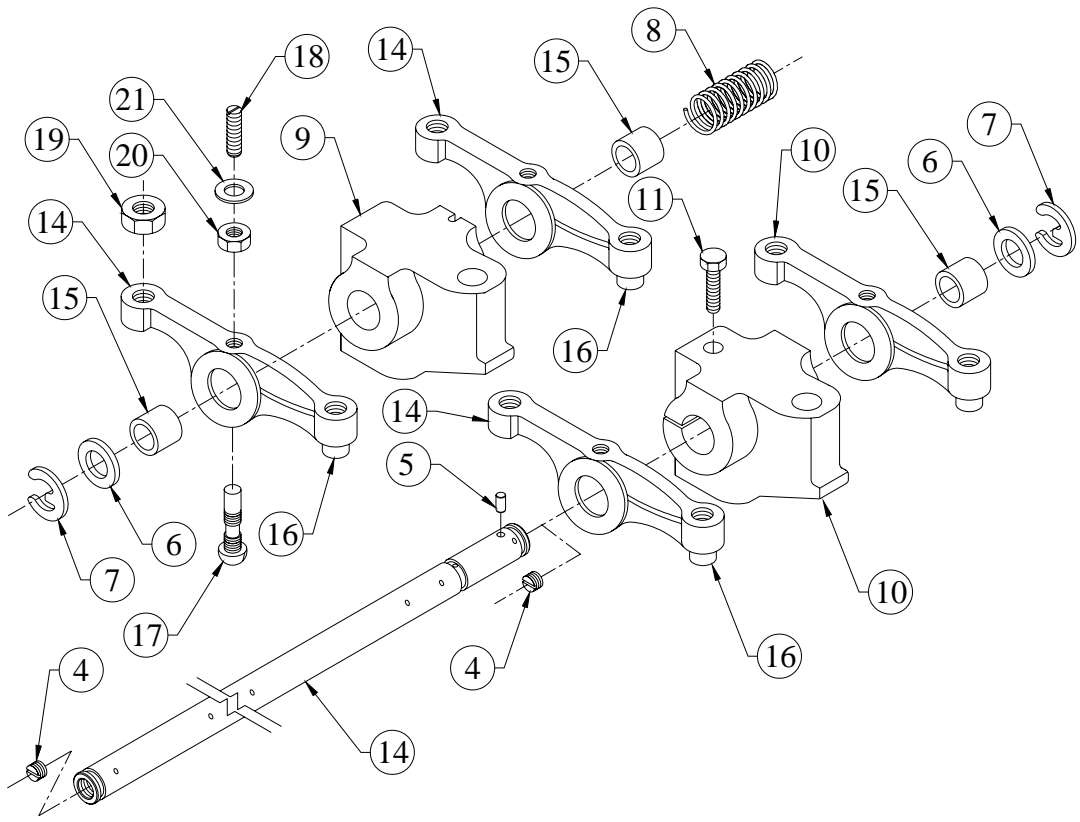
GROUP:- 4H.096...EXP



SR.NO.	PART NO.	DESCRIPTION	QTY.	REMARKS
*1	4H.096.20.0.00	THERMOSTAT AND HOUSING ASSEMBLY (NON ASBESTOS JOINT)	1	CONSISTING OF SR. NO. 3 TO 7 AND 10 TO 13
2	4H.053.01.0.00	THERMOSTAT HOUSING	1	
3	39.040.09.0.00	THERMOSTAT ELEMENT (74 DEG) - WTIL NO.DEV358	1	
4	4H.053.12.0.00	JOINT FOR THERMOSTAT COVER	1	
5	4H.096.03.0.00	THERMOSTAT COVER	1	
6	50.003.08.025	SET SCREW - M8X1.25X25 - 8.8	4	
7	50.506.08.000	PLAIN MACHINED WASHER - M8	4	
8	50.602.14.000	PLUG (M14X1.5)	1	
9	50.565.14.000	INTERNAL RUBBER LIP SEALING WASHER	1	
10	4H.023.02.0.00	BYPASS HOSE	1	
11	4H.405.07.0.00	STAINLESS STEEL HOSE CLIP S/F 35 TO 41 MM HOSE O.D (TO REPLACE 50519/08)	2	
12	50.003.08.025	SET SCREW - M8X1.25X25 - 8.8	4	

TITLE:- VALVE ROCKER ASSEMBLY.

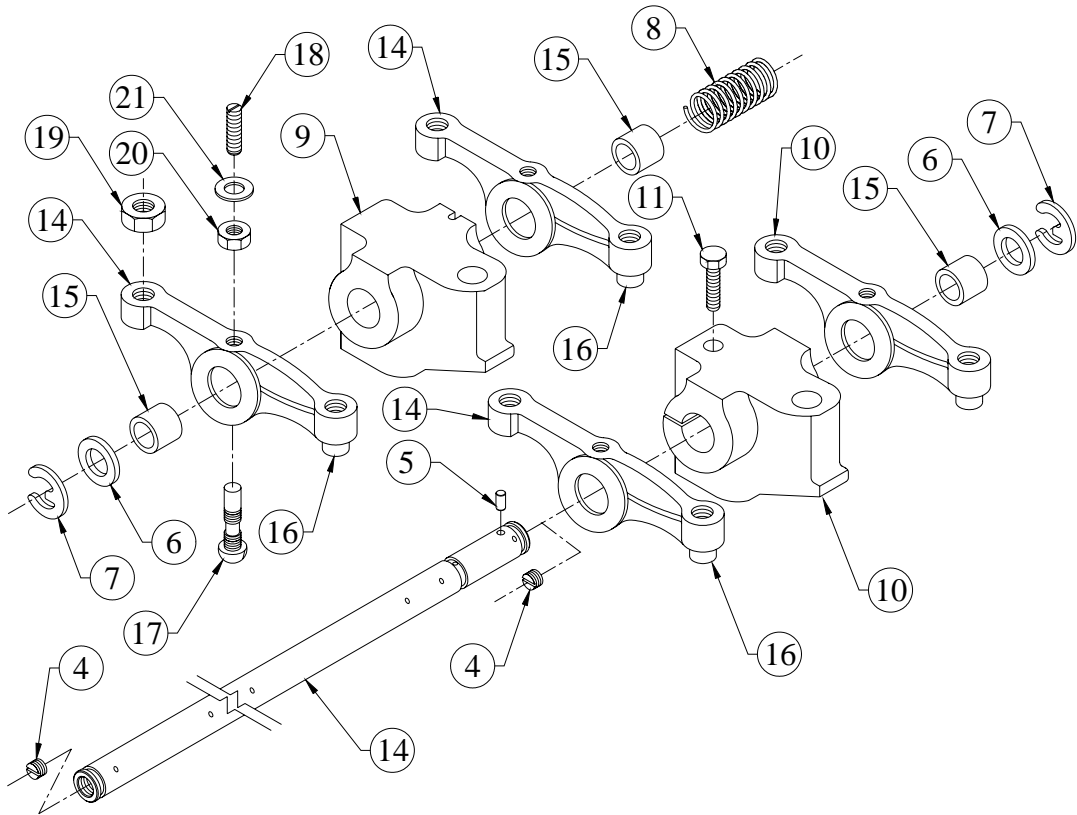
GROUP:- 4H.008



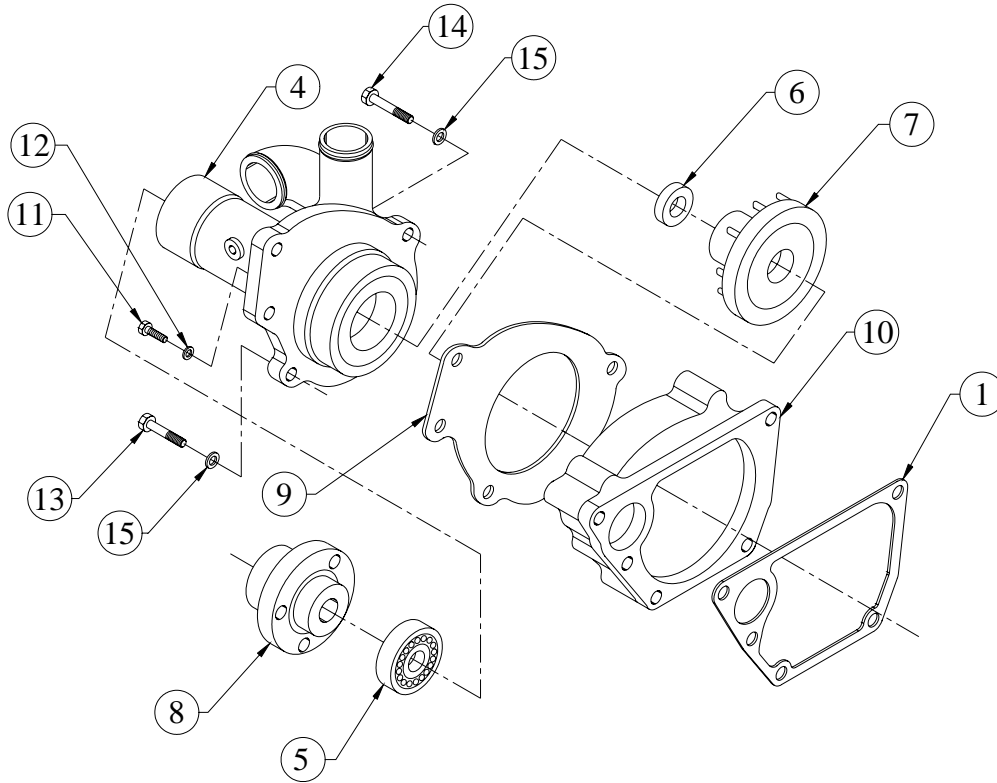
SR.NO.	PART NO.	DESCRIPTION	QTY.	REMARKS
*1	4H.008.10.0.00	VALVE ROCKER ASSEMBLY-COMplete.	1	CONSISTING OD SR. NO. 2, 6 TO 12
*2	4H.008.20.0.00	ROCKER SHAFT SUB.ASSEMBLY.	1	CONSISTING OD SR. NO. 3,4,5
3	4H.008.01.0.00	ROCKER SHAFT (FINISH)	1	
4	50.022.12.010.	SOCKET HEAD GRUB SCREW - M12X10	2	
5	4H.008.04.0.00	GROOVED SOCKET PIN	1	
6	2H.022.04.0.00	WASHER (FOR ROCKER ARM)	2	
7	50.513.15.000.	E TYPE CIRCLIP-EXTERNAL (15 DIA.)	2	
8	2H.022.03.0.00	SPRING FOR ROCKER SHAFT.	3	
9	2H.022.01.0.00	ROCKER SUPPORT (FINISH) (FWE)	1	
10	2H.022.02.0.00	ROCKER SUPPORT (FINISH)	3	
11	50.003.08.030.	SET SCREW - M8X1.25X30 - 8.8	3	

TITLE:- VALVE ROCKER ASSEMBLY.

GROUP:- 4H.008



SR.NO.	PART NO.	DESCRIPTION	QTY.	REMARKS
*12	02.024.20.0.00	VALVE ROCKER ASSLY	8	CONSISTING OF SR. NO. 13, 16 TO 20
*13	02.024.23.0.00	ROCKER ARM SUB ASSEMBLY (WITH VR BUSH)	1	CONSISTING OF SR. NO. 14, 15
14	02.024.11.0.00	ROCKER ARM	1	
15	02.024.12.0.00	V.R. BUSH	1	
16	02.024.15.0.00	V.R.TOE	1	
17	02.024.13.0.00	ROCKER-ARM ADJ. SCREW	1	
18	02.024.14.0.00	OIL METERING SCREW	1	
19	50.006.06.000.	NUT - M6X1 - GR.8	1	
20	60.007.03.0.00	NUT	1	
21	F6.007.13.0.00	WASHER	6	

TITLE: -WATER PUMP**GROUP: -4H.052...EXP**

SR.NO.	PART NO.	DESCRIPTION	QTY.	REMARKS
1	4H.052.12.0.00	JOINT FOR DELIVERY VOLUTE	1	
*2	4H.052.95.0.00	WATER PUMP ASSEMBLY (HIGHER BEARING SIZE)	1	CONSISTING OF SR. NO.- 3, 10 TO 12
*3	4H.052.70.0.00	SUB ASSEMBLY OF DILEVERY VOLUTE	1	CONSISTING OF SR. NO.- 4 TO 9
4	4H.052.05.0.00	BEARING HOUSING (FOR 42 DIA SPINDLE BEARING)	1	
5	4H.052.06.0.00	SPINDLE BEARING (42 DIA)	1	
6	4H.052.07.0.00	UNITISED SEAL (KACO)	1	
7	4H.021.04.0.00	IMPELLER (95 DIA)	1	
8	4H.021.07.0.00	HUB FOR PUMP PULLEY	1	
9	4H.052.11.0.00	JOINT FOR BEARING HOUSING (282.5 CRS)	1	
10	4H.052.02.0.00	DELIVERY VOLUTE (282.5 CRS)	1	
11	50.003.08.025	SET SCREW - M8X1.25X25 - 8.8	3	
12	10.020.03.0.00	HARD WASHER (F)	3	
13	50.002.10.060	SET BOLT - M10X1.5X60 - 8.8	3	

**TITLE: - SET OF JOINTS, WASHERS,
'O' RINGS & HOSES (4H.2145)**

GROUP: -

SR.NO.	PART NO.	DESCRIPTION	QTY.	REMARKS
*1	4H.619.10.0.00	SET OF JOINTS	1	CONSIST OF SR. NO. 2 TO 21
*2	2H.005.11.0.00	JOINT FOR GEAR COVER	1	
*3	2H.006.11.0.00	JOINT FOR OIL SEAL HOUSING	1	
*4	2H.013.11.0.00	JOINT FOR DELIVERY BODY	1	
*5	2H.017.11.0.00	JOINT FOR COVER FOR FUEL PUMP GEAR	1	
*6	2H.037.11.0.00	JOINT FOR FRONT COVER	1	
*7	34.016.12.0.00	JOINT FOR FUEL PUMP (NON ASBESTOS)	1	
*8	34.107.06.0.00	JOINT FOR ADAPTOR ON EX.MANIFOLD	2	
*9	3H.007.13.0.00	JOINT FOR LUB OIL COOLER (NON ASBESTOS GASKET)	1	
*10	3H.007.15.0.00	JOINT FOR HEADER	1	
*11	4H.001.14.0.00	JOINT FOR CAM BORE BLANKING PLATE	1	
*12	4H.007.24.0.00	GASKET FOR CYL. HEAD (THICKNESS 1.25)	1	

**TITLE: - SET OF JOINTS, WASHERS,
'O' RINGS & HOSES (4H.2145)**

GROUP: -

SR.NO.	PART NO.	DESCRIPTION	QTY.	REMARKS
*13	4H.009.11.0.00	JOINT FOR ROCKER COVER	1	
*14	4H.022.11.0.00	JOINT FOR WATER OUTLET MANIFOLD	1	
*15	4H.027.11.0.00	JOINT FOR OIL FILLING BODY	1	
*16	4H.030.11.0.00	JOINT FOR AIR INLET MANIFOLD	2	
*17	4H.052.11.0.00	JOINT FOR BEARING HOUSING (282.5 CRS)	1	
*18	4H.052.12.0.00	JOINT FOR DELIVERY VOLUTE	1	
*19	4H.053.11.0.00	JOINT FOR THERMOSTAT HOUSING	1	
*20	4H.053.12.0.00	JOINT FOR THERMOSTAT COVER	1	
*21	P2.036.02.0.00	GASKET FOR EXHAUST MANIFOLD	4	
*22	4H.619.17.0.00	SET OF WASHERS	1	CONSISTING OF SR. NO. 23 TO 34
*23	4H.010.93.0.00	MICO COPPER WASHER FOR LEAK OFF PIPE (MICO NO. 2 916 710 603)	8	
*24	50.508.07.000.	COPPER WASHER (10X14)	4	
*25	50.508.08.000.	COPPER WASHER (10X16)	1	

**TITLE: - SET OF JOINTS, WASHERS,
'O' RINGS & HOSES (4H.2145)**

GROUP: -

SR.NO.	PART NO.	DESCRIPTION	QTY.	REMARKS
*26	50.508.11.000.	COPPER WASHER (14X18)	1	
*27	50.508.15.000.	COPPER WASHER (17X23)	1	
*28	50.508.16.000.	COPPER WASHER (18X22)	2	
*29	50.508.18.000.	COPPER WASHER (20X24)	2	
*30	50.508.27.000.	COPPER WASHER (24X29)	1	
*31	50.508.29.000.	COPPER WASHER (26X32)	3	
*32	50.565.10.000.	INTERNAL RUBBER LIP SEALING WASHER -M10- FOR FUEL LINES	1	
*33	50.565.12.000.	INTERNAL RUBBER LIP SEALING WASHER -M12- FOR FUEL LINES	5	
*34	50.565.14.000.	INTERNAL RUBBER LIP SEALING WASHER -M14- FOR FUEL LINES	8	
*35	4H.842.87.0.00	SET OF 'O' RINGS	1	CONSIST OF SR. NO. 36 TO 41
*36	03.010.11.0.00	O RING - L.O.PUMP (1.57X65, 21508)	1	
*37	03.036.01.0.00	O RING - DIPSTICK (2X5, 21515 OR 21511)	3	
*38	2H.008.07.0.00	O RING (FOR CYL.LINER)	3	
*39	2H.014.02.0.00	O RING (FOR DELIVERY TUBE)	2	

**TITLE: - SET OF JOINTS, WASHERS,
'O' RINGS & HOSES (4H.2145)**

GROUP: -

SR.NO.	PART NO.	DESCRIPTION	QTY.	REMARKS
*40	3H.009.11.0.00	O RING FOR NOZZLE	1	
*41	3H.132.03.0.00	SEALING RING (FUEL FILTER)	2	
*42	4H.842.88.0.00	SET OF HOSES	1	CONSISTING OF SR. NO. 43 TO 46
*43	4H.006.01.0.00	L.O.SUPPLY HOSE (FIP)	1	
*44	4H.023.02.0.00	BYPASS HOSE	1	
*45	4H.073.02.0.00	HOSE WATER PUMP TO RADIATOR (45X45X80L)	1	
*46	4H.404.02.0.00	HOSE FOR AIR CLEANER	1	